

ZNF318/TZF Antibody

Rabbit Polyclonal

Antigen Affinity Purified Protein ID AAD17298.1

Catalog No. A301-546A-T GenelD 24149

Lot No. A301-546A-T-1

APPLICATIONS	WB, IP, IHC
SPECIES REACTIVITY	Human
AMOUNT	10 µl
CONCENTRATION	1000 µg/ml
STORAGE/SHELF LIFE	2 – 8°C / 1 year from date of receipt
PHYSICAL STATE	Liquid
BUFFER	Tris-citrate/phosphate buffer, pH 7 to 8 containing 0.09% Sodium Azide
ISOTYPE	IgG
ORIGIN	USA
PRODUCTION PROCEDURES	Antibody was affinity purified using an epitope specific to ZNF318/TZF immobilized on solid support.

The epitope recognized by A301-546A-T maps to a region between residue 2049 and 2099 of human zinc finger protein 318 (testicular zinc finger) using the numbering given in entry AAD17298.1 (GeneID 24149).

APPLICATIONS Centrifuge tube to remove product from lid. Optimal working dilutions should be determined experimentally by the investigator. Prepare working dilution immediately before use.

Western Blot 1:2,000 – 1:10,000

Immunoprecipitation 2 – 5 µg/mg lysate

Immunohistochemistry 1:500 – 1:2,000. Epitope retrieval with citrate buffer pH 6.0 is recommended for FFPE tissue sections.

ADDITIONAL INFO <https://www.bethyl.com/product/A301-546A-T>

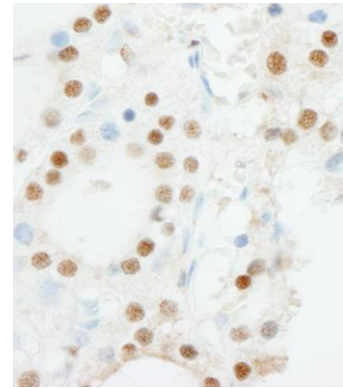
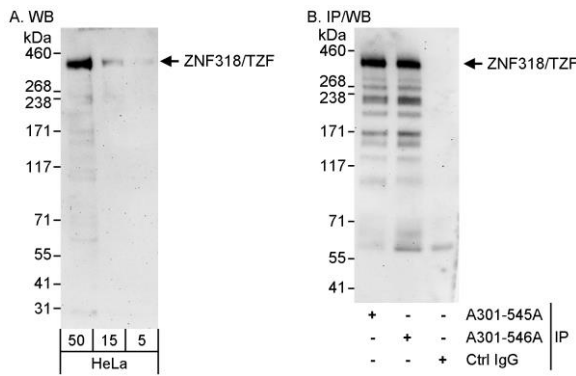
Use the link above to view SDS, a current list of citations, and other product specific information.

IP-western blot protocol: https://www.bethyl.com/content/protocol_IP_WB

This document certifies that this product has met all of the quality control standards defined by Bethyl Laboratories, Inc.

Michael Spencer, PhD

Date: June 6, 2022



Detection of human ZNF318/TZF by western blot and immunoprecipitation. *Samples:* Whole cell lysate (5, 15 and 50 μ g for WB; 1 mg for IP, 20% of IP loaded) from HeLa cells. *Antibodies:* Affinity purified rabbit anti-ZNF318/TZF antibody A301-546A used for WB at 0.4 μ g/ml (A) and 1 μ g/ml (B) and used for IP at 3 μ g/mg lysate. ZNF318/TZF was also immunoprecipitated by rabbit anti-ZNF318/TZF antibody A301-545A, which recognizes an upstream epitope. *Detection:* Chemiluminescence with exposure times of 3 minutes (A and B).

Detection of human ZNF318/TZF by immunohistochemistry. *Sample:* FFPE section of human thyroid carcinoma. *Antibody:* Affinity purified rabbit anti-ZNF318/TZF (Cat. No. A301-546A Lot1) used at a dilution of 1:1,000 (1 μ g/ml). *Detection:* DAB