

# UTP18/WDR50 Antibody

Rabbit Polyclonal

Antigen Affinity Purified

Catalog No. A301-552A

Lot No. A301-552A-1

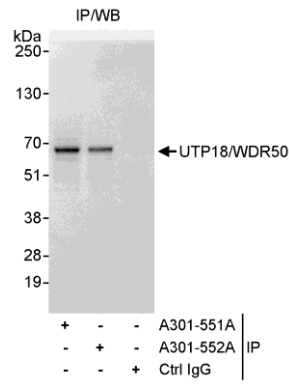
Protein ID NP\_057085.2

Gene ID 51096



|                              |   |
|------------------------------|---|
| <b>APPLICATIONS</b>          | IP  |
| <b>REACTIVITY TESTED</b>     | Human   |
| <b>PRESUMED REACTIVITY</b>   | Based on 100% sequence identity, this antibody is predicted to react with Rat, Bovine, Horse, Rabbit, Pig, Panda, Orangutan, Gorilla, Chimpanzee, White-tufted-ear marmoset, European domestic ferret, Small-eared galago and Little brown bat.   |
| <b>ISOTYPE</b>               | IgG   |
| <b>AMOUNT</b>                | 0.1 ml at 1 mg/ml   |
| <b>STORAGE/SHELF LIFE</b>    | 2 - 8° C / 1 year from date of receipt  |
| <b>PHYSICAL STATE</b>        | Liquid  |
| <b>BUFFER</b>                | Tris-citrate/phosphate buffer, pH 7 to 8 containing 0.09% Sodium Azide  |
| <b>ORIGIN</b>                | USA   |
| <b>PRODUCTION PROCEDURES</b> | <p>Antibody was affinity purified using an epitope specific to UTP18/WDR50 immobilized on solid support.</p> <p>The epitope recognized by A301-552A maps to a region between residue 325 and 375 of human small subunit (SSU) processome component UTP18 (WD repeat domain 50) using the numbering given in entry NP_057085.2 (GeneID 51096).</p> <p>Immunoglobulin concentration was determined by extinction coefficient: absorbance at 280 nm of 1.4 equals 1.0 mg of IgG.</p> |
| <b>APPLICATIONS</b>          | <p>Centrifuge tube to remove product from lid. Optimal working dilutions should be determined experimentally by the investigator. Prepare working dilution immediately before use.</p> <p>Western Blot                      Not recommended. Use A301-551A.</p> <p>Immunoprecipitation            2 to 5 µg/mg lysate</p>   |
| <b>APPLICATION NOTES</b>     | Validation by IP/Western Blot was performed using a 4-20% SDS-PAGE gel and ReliaBLOT® Reagents (Cat. No. WB120).  |
| <b>ADDITIONAL INFO</b>       | <p><a href="http://www.bethyl.com/product/A301-552A">http://www.bethyl.com/product/A301-552A</a></p> <p>Use the link above to view SDS, a current list of citations, and other product specific information.</p>  |

# UTP18/WDR50 Antibody: A301-552A



**Detection of Human UTP18/WDR50 by Western Blot of Immunoprecipitates.** *Samples:* Whole cell lysate (1 mg for IP, 20% of IP loaded) from HeLa cells. *Antibodies:* Affinity purified rabbit anti-UTP18/WDR50 antibody A301-552A used for IP at 3  $\mu\text{g}/\text{mg}$  lysate. UTP18/WDR50 was also immunoprecipitated by rabbit anti-UTP18/WDR50 antibody A301-551A, which recognizes an upstream epitope. For blotting immunoprecipitated UTP18/WDR50, A301-551A was used at 0.1  $\mu\text{g}/\text{ml}$ . *Detection:* Chemiluminescence with an exposure time of 1 second.