

WDR77/MEP50 Antibody

Rabbit Polyclonal

Antigen Affinity Purified

Protein ID NP_077007.1

Catalog No. A301-561A

GeneID 79084

Lot No. A301-561A-1



APPLICATIONS	IP, IHC
SPECIES REACTIVITY	Human
PRESUMED REACTIVITY	Based on 100% sequence identity, this antibody is predicted to react with Bovine and Orangutan
AMOUNT	100 µl
CONCENTRATION	1000 µg/ml
STORAGE/SHELF LIFE	2 - 8° C / 1 year from date of receipt
PHYSICAL STATE	Liquid
BUFFER	Tris-citrate/phosphate buffer, pH 7 to 8 containing 0.09% Sodium Azide
ISOTYPE	IgG
ORIGIN	USA
PRODUCTION PROCEDURES	Antibody was affinity purified using an epitope specific to WDR77/MEP50 immobilized on solid support.

The epitope recognized by A301-561A maps to a region between residue 1 and 50 of human WD repeat domain 77 (methylosome protein 50) using the numbering given in entry NP_077007.1 (GeneID 79084).

Immunoglobulin concentration was determined by extinction coefficient: absorbance at 280 nm of 1.4 equals 1.0 mg of IgG.

APPLICATIONS Centrifuge tube to remove product from lid. Optimal working dilutions should be determined experimentally by the investigator. Prepare working dilution immediately before use.

Western Blot Not recommended. Use rabbit anti-WDR77/MEP50 antibody A301-562A.

Immunoprecipitation 2 - 5 µg/mg lysate

Immunohistochemistry 1:1,000 - 1:5,000. Epitope retrieval with citrate buffer pH 6.0 is recommended for FFPE tissue sections.

APPLICATION NOTES Western blot of immunoprecipitates performed using Normal Pig Serum (Cat. No. S100-020), Goat anti-Rabbit Light Chain HRP Conjugate (Cat. No. A120-113P) and 4-20% SDS-PAGE (link to IP-western blot protocol in Additional Info section below).

IHC HUMAN CONTROLS Breast Carcinoma, Pancreatic Islet Cell Tumor, Prostate Carcinoma

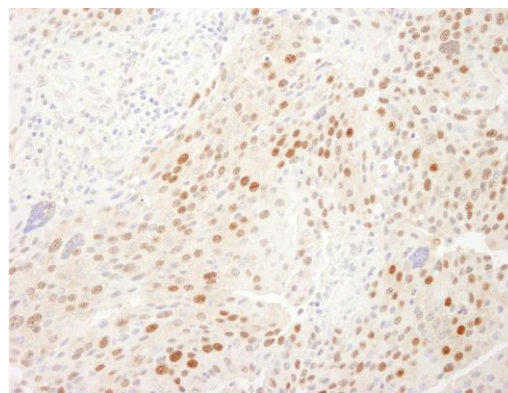
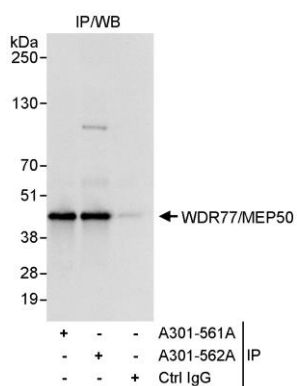
ADDITIONAL INFO <https://www.bethyl.com/product/A301-561A>

Use the link above to view SDS, a current list of citations, and other product specific information.

IP-western blot protocol: https://www.bethyl.com/content/protocol_IP_WB

This document certifies that this product has met all of the quality control standards defined by Bethyl Laboratories, Inc.
Eric McIntush, PhD | Chief Scientific Officer

Date: June 21, 2019



Detection of human WDR77/MEP50 by western blot of immunoprecipitates. *Samples:* Whole cell lysate (1 mg for IP, 20% of IP loaded) from HeLa cells. *Antibodies:* Affinity purified rabbit anti-WDR77/MEP50 antibody A301-561A used for IP at 3 µg/mg lysate. WDR77/MEP50 was also immunoprecipitated by rabbit anti-WDR77/MEP50 antibody A301-562A, which recognizes a downstream epitope. For blotting immunoprecipitated WDR77/MEP50, A301-562A was used at 1 µg/ml. *Detection:* Chemiluminescence with an exposure time of 1 second.

Detection of human WDR77/MEP50 by immunohistochemistry. *Sample:* FFPE section of human pancreatic islet cell tumor. *Antibody:* Affinity purified rabbit anti-WDR77/MEP50 (Cat. No. A301-561A Lot1) used at a dilution of 1:5,000 (0.2 µg/ml). *Detection:* DAB