

METTTL3/MT-A70 Antibody

Rabbit Polyclonal

Antigen Affinity Purified

Protein ID NP_062826.2

Catalog No. A301-567A

GeneID 56339

Lot No. A301-567A-1



APPLICATIONS	WB, IP, IHC
SPECIES REACTIVITY	Human, Mouse
ISOTYPE	IgG
AMOUNT	100 µl at 0.2 mg/ml
STORAGE/SHELF LIFE	2 - 8° C / 1 year from date of receipt
PHYSICAL STATE	Liquid
BUFFER	Tris-buffered Saline containing 0.1% BSA and 0.09% Sodium Azide
ORIGIN	USA
PRODUCTION PROCEDURES	Antibody was affinity purified using an epitope specific to METTL3/MT-A70 immobilized on solid support.

The epitope recognized by A301-567A maps to a region between residue 1 and 50 of human methyltransferase like 3 (N6-adenosine-methyltransferase 70 kDa subunit) using the numbering given in entry NP_062826.2 (GeneID 56339).

Immunoglobulin concentration was determined by extinction coefficient: absorbance at 280 nm of 1.4 equals 1.0 mg of IgG.

APPLICATIONS Centrifuge tube to remove product from lid. Optimal working dilutions should be determined experimentally by the investigator. Prepare working dilution immediately before use.

Western Blot 1:2,000 - 1:10,000

Immunoprecipitation 2 - 5 µg/mg lysate

Immunohistochemistry 1:200 - 1:1,000. Epitope retrieval with citrate buffer pH 6.0 is recommended for FFPE tissue sections.

APPLICATION NOTES Western blot of immunoprecipitates performed using ReliaBLOT® Reagents (Cat. No. WB120) and 4-20% SDS-PAGE.

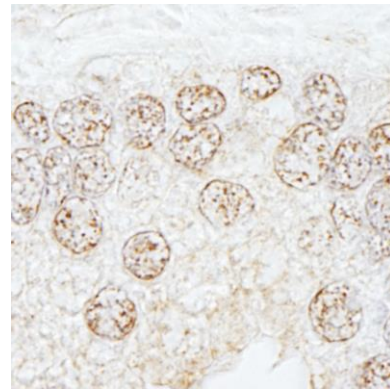
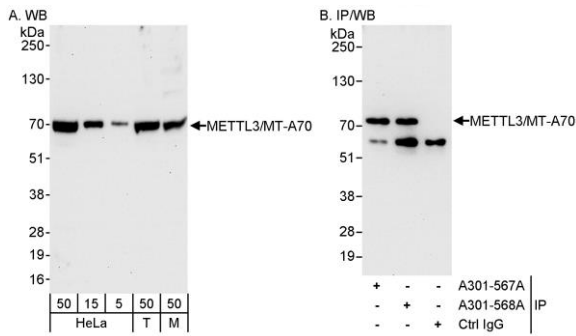
Western blot of lysates performed using standard western blot reagents and 4-20% SDS-PAGE.

IHC HUMAN CONTROLS Breast Carcinoma, Colon Carcinoma, Ovarian Carcinoma, Prostate Carcinoma

IHC MOUSE CONTROLS Teratoma

ADDITIONAL INFO <http://www.bethyl.com/product/A301-567A>

Use the link above to view SDS, a current list of citations, and other product specific information.



Detection of human and mouse METTL3/MT-A70 by western blot (h&m) and immunoprecipitation (h). *Samples:* Whole cell lysate from HeLa (5, 15 and 50 µg for WB; 1 mg for IP, 20% of IP loaded), 293T (T; 50 µg) and mouse NIH3T3 (M; 50 µg) cells. *Antibodies:* Affinity purified rabbit anti-METTL3/MT-A70 antibody A301-567A used for WB at 0.04 µg/ml (A) and 0.1 µg/ml (B) and used for IP at 3 µg/mg lysate. METTL3/MT-A70 was also immunoprecipitated by rabbit anti-METTL3/MT-A70 antibody A301-568A, which recognizes a downstream epitope. *Detection:* Chemiluminescence with exposure times of 30 seconds (A and B).

Detection of human METTL3/MT-A70 by immunohistochemistry. *Sample:* FFPE section of human prostate carcinoma. *Antibody:* Affinity purified rabbit anti-METTL3/MT-A70 (Cat. No. A301-567A Lot1) used at a dilution of 1:1,000 (0.2µg/ml). *Detection:* DAB