

# MAZ/SAF-1 Antibody

Rabbit Polyclonal

Antigen Affinity Purified

Catalog No. A301-652A

Lot No. A301-652A-1

Protein ID BAA33064.1

Gene ID 4150



**APPLICATIONS** WB, IP, IHC-P, IF

**REACTIVITY TESTED** Human

**PRESUMED REACTIVITY** Based on 100% sequence identity, this antibody is predicted to react with Mouse, Rat, Horse, Rabbit, Guinea pig\_10141, Pig, Panda, Rhesus Monkey, Chimpanzee, Tasmanian devil, White-tufted-ear marmoset, Chinese hamster, Small-eared galago, Thirteen-lined ground squirrel and Northern white-cheeked gibbon.

**ISOTYPE** IgG

**AMOUNT** 0.1 ml at 1 mg/ml

**STORAGE/SHELF LIFE** 2 - 8° C / 1 year from date of receipt

**PHYSICAL STATE** Liquid

**BUFFER** Tris-citrate/phosphate buffer, pH 7 to 8 containing 0.09% Sodium Azide

**ORIGIN** USA

**PRODUCTION PROCEDURES** Antibody was affinity purified using an epitope specific to MAZ/SAF-1 immobilized on solid support.

The epitope recognized by A301-652A maps to a region between residue 427 and 477 of human MYC-associated zinc finger protein using the numbering given in entry BAA33064.1 (GeneID 4150).

Immunoglobulin concentration was determined by extinction coefficient: absorbance at 280 nm of 1.4 equals 1.0 mg of IgG.

**APPLICATIONS** Centrifuge tube to remove product from lid. Optimal working dilutions should be determined experimentally by the investigator. Prepare working dilution immediately before use.

Western Blot 1:2,000 to 1:10,000

Immunoprecipitation 2 to 5 µg/mg lysate

Immunohistochemistry 1:500 to 1:2,000. Epitope retrieval with citrate buffer pH6.0 is recommended for FFPE tissue sections.

Immunofluorescence 1:250 to 1:1,000.

**APPLICATION NOTES** Validation by IP/Western Blot was performed using a 4-20% SDS-PAGE gel and ReliaBLOT® Reagents (Cat. No. WB120).

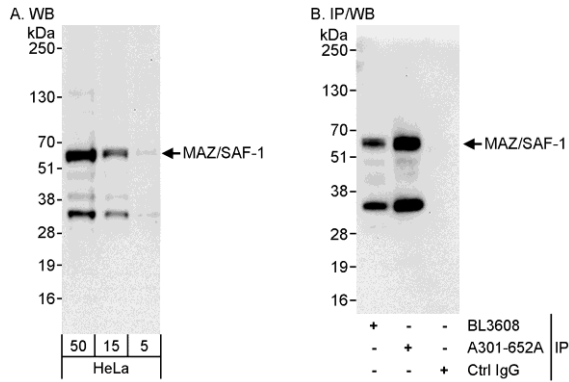
IHC validation was performed using Immunohistochemistry Accessory Kit (Cat. # IHC-101).

**IHC HUMAN CONTROLS** Breast Carcinoma, Ovarian Carcinoma, Prostate Carcinoma

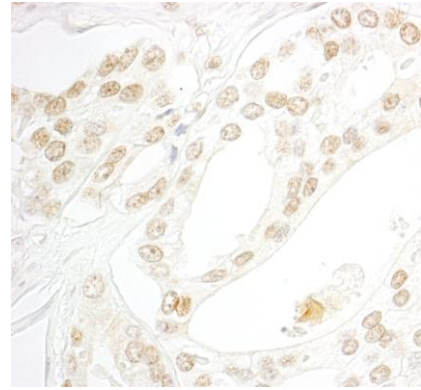
**ADDITIONAL INFO** <http://www.bethyl.com/product/A301-652A>

Use the link above to view SDS, a current list of citations, and other product specific information.

# MAZ/SAF-1 Antibody: A301-652A



**Detection of Human MAZ/SAF-1 by Western Blot and Immunoprecipitation.** *Samples:* Whole cell lysate (5, 15 and 50  $\mu$ g for WB; 1 mg for IP, 20% of IP loaded) from HeLa cells. *Antibodies:* Affinity purified rabbit anti-MAZ/SAF-1 antibody A301-652A used for WB at 0.1  $\mu$ g/ml (A) and 1  $\mu$ g/ml (B) and used for IP at 3  $\mu$ g/mg lysate. MAZ/SAF-1 was also immunoprecipitated by rabbit anti-MAZ/SAF-1 antibody BL3608, which recognizes an upstream epitope. *Detection:* Chemiluminescence with exposure times of 30 seconds (A and B).



**Detection of Human MAZ/SAF-1 by Immunohistochemistry.** *Sample:* FFPE section of human prostate carcinoma. *Antibody:* Affinity purified rabbit anti-MAZ/SAF-1 (Cat. No. A301-652A Lot1) used at a dilution of 1:1,000 (1 $\mu$ g/ml). *Detection:* DAB