

# ESCO2 Antibody

Rabbit Polyclonal

Antigen Affinity Purified

Protein ID NP\_001017420.1

Catalog No. A301-689A-M

Gene ID 157570

Lot No. A301-689A-M-1



**APPLICATIONS** WB, IP, PLA

**REACTIVITY TESTED** Human

**PRESUMED REACTIVITY** Based on 100% sequence identity, this antibody is predicted to react with Gorilla and Chimpanzee.

**ISOTYPE** IgG

**AMOUNT** 100 µl (10 blots)

**STORAGE/SHELF LIFE** 2 - 8° C / 1 year from date of receipt

**PHYSICAL STATE** Liquid

**BUFFER** Tris-buffered Saline with 0.1% BSA containing 0.09% Sodium Azide

**ORIGIN** USA

**PRODUCTION PROCEDURES** Antibody was affinity purified using an epitope specific to ESCO2 immobilized on solid support.

The epitope recognized by A301-689A-M maps to a region between residue 200 and 250 of human establishment of cohesion 1 homolog 2 using the numbering given in entry NP\_001017420.1 (GeneID 157570).

**APPLICATIONS** Centrifuge tube to remove product from lid. Optimal working dilutions should be determined experimentally by the investigator. Prepare working dilution immediately before use.

Western Blot 1:1000

Immunoprecipitation The antibody contained within A301-689A-M has been qualified for use in immunoprecipitation; however, we recommend using the alternative formulation of this antibody found as product A301-689A.

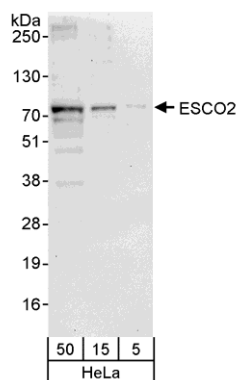
Proximity Ligation Assay The antibody contained within A301-689A-M has been qualified for use in PLA; however, we recommend using the alternative formulation of this antibody found as product A301-689A.

**ADDITIONAL INFO** <http://www.bethyl.com/product/A301-689A-M>

Use the link above to view SDS, a current list of citations, and other product specific information.

## ESCO2 Antibody: A301-689A-M

---



**Detection of Human ESCO2 by Western Blot.** *Samples:* Whole cell lysate (5, 15, and 50 µg) from HeLa cells. *Antibody:* Affinity purified rabbit anti-ESCO2 antibody A301-689A-M used at 1:1000. *Detection:* Chemiluminescence with an exposure time of 30 seconds.