

# SOX2 Antibody

Rabbit Polyclonal

Antigen Affinity Purified      Protein ID    NP\_003097.1  
Catalog No.    A301-741A-M      GeneID      6657  
Lot No.      A301-741A-M-1



**APPLICATIONS**      WB, IP  
**SPECIES REACTIVITY**      Human  
**PRESUMED REACTIVITY**      Based on 100% sequence identity, this antibody is predicted to react with X. laevis, X. tropicalis, Chicken and Sheep  
**AMOUNT**      100 µl (10 blots)  
**CONCENTRATION**      40 µg/ml  
**STORAGE/SHELF LIFE**      2 - 8° C / 1 year from date of receipt  
**PHYSICAL STATE**      Liquid  
**BUFFER**      Tris-buffered Saline containing 0.1% BSA and 0.09% Sodium Azide  
**ISOTYPE**      IgG  
**ORIGIN**      USA  
**PRODUCTION PROCEDURES**      Antibody was affinity purified using an epitope specific to SOX2 immobilized on solid support.

The epitope recognized by A301-741A-M maps to a region between residue 295 and 317 of human SRY (sex determining region Y)-box 2 using the numbering given in entry NP\_003097.1 (GeneID 6657).

**APPLICATIONS**      Centrifuge tube to remove product from lid. Optimal working dilutions should be determined experimentally by the investigator. Prepare working dilution immediately before use.

Western Blot      1:1000

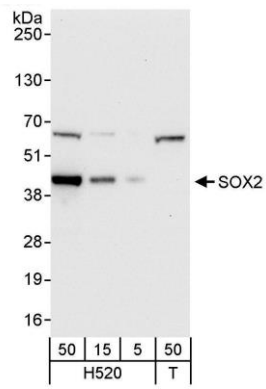
Immunoprecipitation      The antibody contained within A301-741A-M has been qualified for use in immunoprecipitation; however, we recommend using the alternative formulation of this antibody found as product A301-741A.

**APPLICATION NOTES**      Western blot of immunoprecipitates performed using Normal Pig Serum (Cat. No. S100-020), Goat anti-Rabbit Light Chain HRP Conjugate (Cat. No. A120-113P) and 4-20% SDS-PAGE (link to IP-western blot protocol in Additional Info section below).

Western blot of lysates performed using standard western blot reagents and 4-20% SDS-PAGE.

**ADDITIONAL INFO**      <https://www.bethyl.com/product/A301-741A-M>  
Use the link above to view SDS, a current list of citations, and other product specific information.  
IP-western blot protocol: [https://www.bethyl.com/content/protocol\\_IP\\_WB](https://www.bethyl.com/content/protocol_IP_WB)

This document certifies that this product has met all of the quality control standards defined by Bethyl Laboratories, Inc.  
Eric McIntush, PhD | Chief Scientific Officer      Date: June 21, 2019



**Detection of human SOX2 by western blot.** *Samples:* Whole cell lysate from H520 (5, 15, and 50 µg) and HEK293T (T; 50 µg) cells. *Antibody:* Affinity purified rabbit anti-SOX2 antibody A301-741A-M used at 1:1000. *Detection:* Chemiluminescence with an exposure time of 10 seconds.