

eIF3B/EIF3S9 Antibody

Rabbit Polyclonal

Antigen Affinity Purified

Protein ID NP_003742.2

Catalog No. A301-761A

GeneID 8662

Lot No. A301-761A-1



APPLICATIONS	WB, IP, IHC
SPECIES REACTIVITY	Human
ISOTYPE	IgG
AMOUNT	100 µl at 0.2 mg/ml
STORAGE/SHELF LIFE	2 - 8° C / 1 year from date of receipt
PHYSICAL STATE	Liquid
BUFFER	Tris-buffered Saline containing 0.1% BSA and 0.09% Sodium Azide
ORIGIN	USA
PRODUCTION PROCEDURES	Antibody was affinity purified using an epitope specific to eIF3B/EIF3S9 immobilized on solid support.

The epitope recognized by A301-761A maps to a region between residue 100 and 150 of human eukaryotic translation initiation factor 3, subunit B (eukaryotic translation initiation factor 3, subunit 9) using the numbering given in entry NP_003742.2 (GeneID 8662).

Immunoglobulin concentration was determined by extinction coefficient: absorbance at 280 nm of 1.4 equals 1.0 mg of IgG.

APPLICATIONS Centrifuge tube to remove product from lid. Optimal working dilutions should be determined experimentally by the investigator. Prepare working dilution immediately before use.

Western Blot 1:2,000 - 1:10,000

Immunoprecipitation 2 - 5 µg/mg lysate

Immunohistochemistry 1:100 - 1:500. Epitope retrieval with citrate buffer pH 6.0 is recommended for FFPE tissue sections.

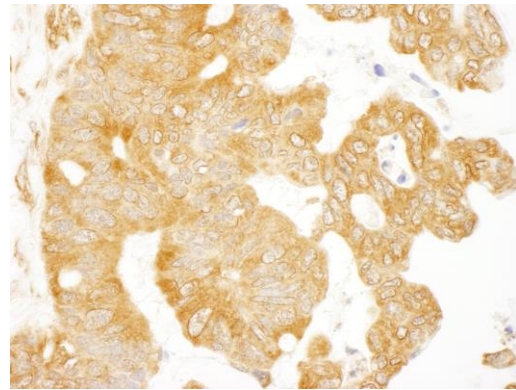
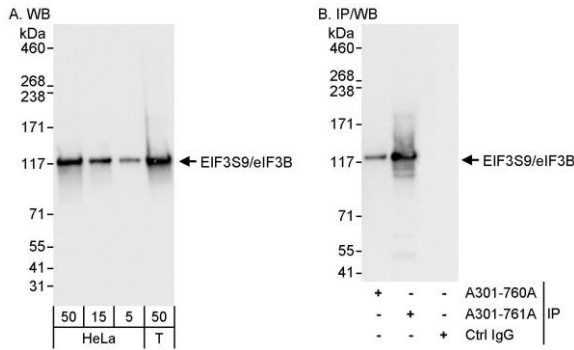
APPLICATION NOTES Western blot of immunoprecipitates performed using ReliaBLOT® Reagents (Cat. No. WB120) and 4-8% SDS-PAGE.

Western blot of lysates performed using standard western blot reagents and 4-8% SDS-PAGE.

IHC HUMAN CONTROLS Ovarian Carcinoma

ADDITIONAL INFO <http://www.bethyl.com/product/A301-761A>

Use the link above to view SDS, a current list of citations, and other product specific information.



Detection of human EIF3S9/eIF3B by western blot and immunoprecipitation. *Samples:* Whole cell lysate from HeLa (5, 15 and 50 µg for WB; 1 mg for IP, 20% of IP loaded) and 293T (T; 50 µg) cells. *Antibody:* Affinity purified rabbit anti-EIF3S9/eIF3B antibody A301-761A used for WB at 0.04 µg/ml (A) and 1 µg/ml (B) and used for IP at 3 µg/mg lysate. EIF3S9/eIF3B was also immunoprecipitated by rabbit anti-EIF3S9/eIF3B antibody A301-760A, which recognizes an upstream epitope. *Detection:* Chemiluminescence with exposure times of 10 seconds (A) and 1 second (B).

Detection of human EIF3S9/eIF3B by immunohistochemistry. *Sample:* FFPE section of human ovarian carcinoma. *Antibody:* Affinity purified rabbit anti-EIF3S9/eIF3B (Cat. No. A301-761A) used at a dilution of 1:200 (1µg/ml). *Detection:* DAB