

# PHF8 Antibody

Rabbit Polyclonal

Antigen Affinity Purified

Protein ID CAI41576.1

Catalog No. A301-772A

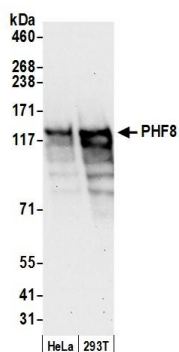
GeneID 23133

Lot No. A301-772A-3

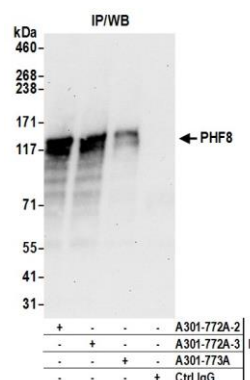


<b>APPLICATIONS</b>	WB, IP, IHC, ChIP-Seq								
<b>SPECIES REACTIVITY</b>	Human, Mouse								
<b>AMOUNT</b>	100 µl								
<b>CONCENTRATION</b>	200 µg/ml								
<b>STORAGE/SHELF LIFE</b>	2 – 8° C / 1 year from date of receipt								
<b>PHYSICAL STATE</b>	Liquid								
<b>BUFFER</b>	Tris-buffered Saline containing 0.1% BSA and 0.09% Sodium Azide								
<b>ISOTYPE</b>	IgG								
<b>ORIGIN</b>	USA								
<b>PRODUCTION PROCEDURES</b>	<p>Antibody was affinity purified using an epitope specific to PHF8 immobilized on solid support.</p> <p>The epitope recognized by A301-772A maps to a region between residue 650 and 700 of human PHD finger protein 8 using the numbering given in entry CAI41576.1 (GeneID 23133).</p> <p>Immunoglobulin concentration was determined by extinction coefficient: absorbance at 280 nm of 1.4 equals 1.0 mg of IgG.</p>								
<b>APPLICATIONS</b>	<p>Centrifuge tube to remove product from lid. Optimal working dilutions should be determined experimentally by the investigator. Prepare working dilution immediately before use.</p> <table><tr><td>Western Blot</td><td>1:2,000 – 1:10,000</td></tr><tr><td>Immunoprecipitation</td><td>2 – 10 µg/mg lysate</td></tr><tr><td>Immunohistochemistry</td><td>1:100 – 1:500. Epitope retrieval with citrate buffer pH 6.0 is recommended for FFPE tissue sections.</td></tr><tr><td>ChIP-Seq</td><td>ChIP-Seq 10 µg as per Ram O et al., Cell. 2011 Dec 23;147(7):1628-39. Previous lots of this antibody have performed in this application.</td></tr></table>	Western Blot	1:2,000 – 1:10,000	Immunoprecipitation	2 – 10 µg/mg lysate	Immunohistochemistry	1:100 – 1:500. Epitope retrieval with citrate buffer pH 6.0 is recommended for FFPE tissue sections.	ChIP-Seq	ChIP-Seq 10 µg as per Ram O et al., Cell. 2011 Dec 23;147(7):1628-39. Previous lots of this antibody have performed in this application.
Western Blot	1:2,000 – 1:10,000								
Immunoprecipitation	2 – 10 µg/mg lysate								
Immunohistochemistry	1:100 – 1:500. Epitope retrieval with citrate buffer pH 6.0 is recommended for FFPE tissue sections.								
ChIP-Seq	ChIP-Seq 10 µg as per Ram O et al., Cell. 2011 Dec 23;147(7):1628-39. Previous lots of this antibody have performed in this application.								
<b>APPLICATION NOTES</b>	<p>Western blot of immunoprecipitates performed using Normal Pig Serum (Cat. No. S100-020), Goat anti-Rabbit Light Chain HRP Conjugate (Cat. No. A120-113P) and 4-8% SDS-PAGE (link to IP-western blot protocol in Additional Info section below).</p> <p>Western blot of lysates performed using standard western blot reagents and 4-8% SDS-PAGE.</p>								
<b>IHC HUMAN CONTROLS</b>	Breast Carcinoma, Ovarian Carcinoma, Prostate Carcinoma								
<b>IHC MOUSE CONTROLS</b>	Renal Cell Carcinoma, Teratoma								
<b>ADDITIONAL INFO</b>	<p><a href="https://www.bethyl.com/product/A301-772A">https://www.bethyl.com/product/A301-772A</a></p> <p>Use the link above to view SDS, a current list of citations, and other product specific information. IP-western blot protocol: <a href="https://www.bethyl.com/content/protocol_IP_WB">https://www.bethyl.com/content/protocol_IP_WB</a></p>								

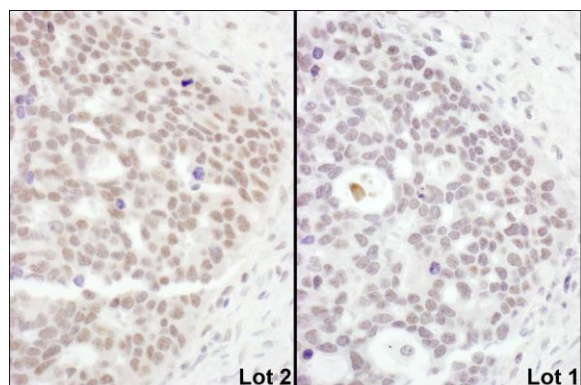
This document certifies that this product has met all of the quality control standards defined by Bethyl Laboratories, Inc.  
Eric McIntush, PhD | Chief Scientific Officer Date: June 24, 2019



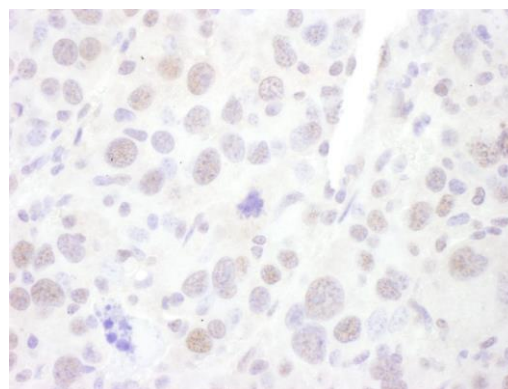
**Detection of human PHF8 by western blot.** *Samples:* Whole cell lysate (50 µg) from HeLa and HEK293T cells prepared using NETN lysis buffer. *Antibody:* Affinity purified rabbit anti-PHF8 antibody A301-772A (lot A301-772A-2) used for WB at 0.04 µg/ml. *Detection:* Chemiluminescence with an exposure time of 30 seconds.



**Detection of human PHF8 by western blot of immunoprecipitates.** *Samples:* Whole cell lysate (0.5 or 1.0 mg per IP reaction; 20% of IP loaded) from HeLa cells prepared using NETN lysis buffer. *Antibodies:* Affinity purified rabbit anti-PHF8 antibody A301-772A (lot A301-772A-2) used for IP at 6 µg per reaction. PHF8 was also immunoprecipitated by a previous lot of this antibody (lot A301-772A-2) and rabbit anti-PHF8 antibody A303-773A For blotting immunoprecipitated PHF8, A301-772A was used at 0.4 µg/ml. *Detection:* Chemiluminescence with an exposure time of 30 seconds.



**Detection of human PHF8 by immunohistochemistry.** *Samples:* FFPE serial sections of human ovarian carcinoma. *Antibody:* Affinity purified rabbit anti-PHF8 (Cat. No. A301-772A Lot2) used at a dilution of 1:200 (1 µg/ml). *Detection:* DAB



**Detection of mouse PHF8 by immunohistochemistry.** *Sample:* FFPE section of mouse renal cell carcinoma. *Antibody:* Affinity purified rabbit anti-PHF8 (Cat. No. A301-772A Lot2) used at a dilution of 1:200 (1 µg/ml). *Detection:* DAB