

# eIF4G1 /eIF4GI Antibody

Rabbit Polyclonal

Antigen Affinity Purified

Protein ID NP\_886553.2

Catalog No. A301-774A

GeneID 1981

Lot No. A301-774A-1



<b>APPLICATIONS</b>	WB, IP, IHC
<b>SPECIES REACTIVITY</b>	Human
<b>AMOUNT</b>	100 µl
<b>CONCENTRATION</b>	200 µg/ml
<b>STORAGE/SHELF LIFE</b>	2 – 8° C / 1 year from date of receipt
<b>PHYSICAL STATE</b>	Liquid
<b>BUFFER</b>	Tris-buffered Saline containing 0.1% BSA and 0.09% Sodium Azide
<b>ISOTYPE</b>	IgG
<b>ORIGIN</b>	USA
<b>PRODUCTION PROCEDURES</b>	Antibody was affinity purified using an epitope specific to eIF4G1 /eIF4GI immobilized on solid support.

The epitope recognized by A301-774A maps to a region between residue 200 and 250 of human eukaryotic translation initiation factor 4 gamma, 1 using the numbering given in entry NP\_886553.2 (GeneID 1981).

Immunoglobulin concentration was determined by extinction coefficient: absorbance at 280 nm of 1.4 equals 1.0 mg of IgG.

**APPLICATIONS** Centrifuge tube to remove product from lid. Optimal working dilutions should be determined experimentally by the investigator. Prepare working dilution immediately before use.

Western Blot 1:2,000 – 1:10,000

Immunoprecipitation 2 – 5 µg/mg lysate

Immunohistochemistry 1:100 – 1:500. Epitope retrieval with citrate buffer pH 6.0 is recommended for FFPE tissue sections.

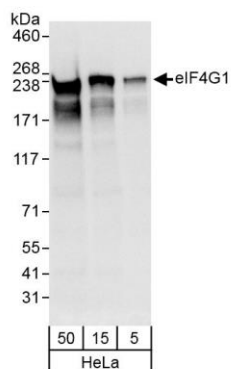
**APPLICATION NOTES** Western blot of immunoprecipitates performed using Normal Pig Serum (Cat. No. S100-020), Goat anti-Rabbit Light Chain HRP Conjugate (Cat. No. A120-113P) and 4-8% SDS-PAGE (link to IP-western blot protocol in Additional Info section below).

**IHC HUMAN CONTROLS** Western blot of lysates performed using standard western blot reagents and 4-8% SDS-PAGE. Ovarian Carcinoma

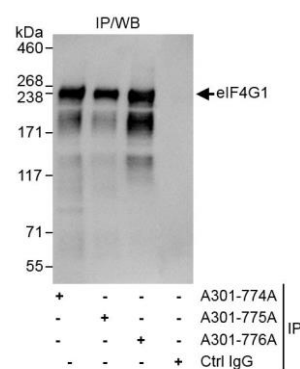
**ADDITIONAL INFO** <https://www.bethyl.com/product/A301-774A>

Use the link above to view SDS, a current list of citations, and other product specific information. IP-western blot protocol [https://www.bethyl.com/content/protocol\\_IP\\_WB](https://www.bethyl.com/content/protocol_IP_WB)

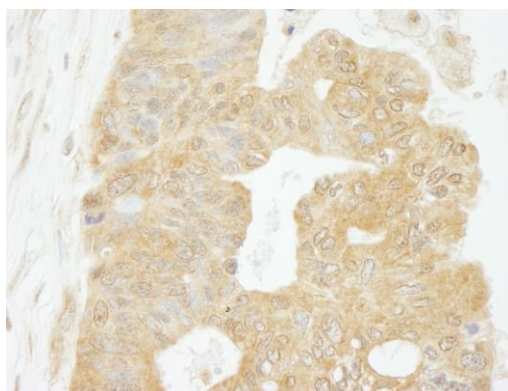
This document certifies that this product has met all of the quality control standards defined by Bethyl Laboratories, Inc.  
Eric McIntush, PhD | Chief Scientific Officer Date: October 22, 2019



**Detection of human eIF4G1 by western blot.** *Samples:* Whole cell lysate (5, 15 and 50 µg) from HeLa cells. *Antibody:* Affinity purified rabbit anti-eIF4G1 antibody A301-774A (lot A301-774A-1) used for WB at 0.04 µg/ml. *Detection:* Chemiluminescence with exposure time of 3 seconds.



**Detection of human eIF4G1 by western blot of immunoprecipitates.** *Samples:* Whole cell lysate (1 mg for IP, 20% of IP loaded) from HeLa cells. *Antibody:* Affinity purified rabbit anti-eIF4G1 antibody A301-774A (lot A301-774A-1) used for IP at 3 µg/mg lysate. eIF4G1 was also immunoprecipitated by rabbit anti-eIF4G1 antibodies A301-775A and A301-776A, which recognize downstream epitopes. For blotting immunoprecipitated eIF4G1, A301-774A was used at 1.0 µg/ml. *Detection:* Chemiluminescence with exposure time of 1 second.



**Detection of human eIF4G1 by immunohistochemistry.** *Sample:* FFPE section of human ovarian carcinoma. *Antibody:* Affinity purified rabbit anti-eIF4G1 (Cat. No. A301-774A lot 1) used at a dilution of 1:200 (1 µg/ml). *Detection:* DAB