

RanBP8 Antibody

Rabbit Polyclonal

Antigen Affinity Purified

Protein ID NP_006381.2

Catalog No. A301-804A-T

GeneID 10526

Lot No. A301-804A-T-1

APPLICATIONS	WB
SPECIES REACTIVITY	Human
AMOUNT	10 µl
CONCENTRATION	1000 µg/ml
STORAGE/SHELF LIFE	2 – 8°C / 1 year from date of receipt
PHYSICAL STATE	Liquid
BUFFER	Tris-citrate/phosphate buffer, pH 7 to 8 containing 0.09% Sodium Azide
ISOTYPE	IgG
ORIGIN	USA
PRODUCTION PROCEDURES	Antibody was affinity purified using an epitope specific to RanBP8 immobilized on solid support.

The epitope recognized by A301-804A-T maps to a region between residue 987 and 1037 of human RAN binding protein 8 using the numbering given in entry NP_006381.2 (GeneID 10526).

APPLICATIONS Centrifuge tube to remove product from lid. Optimal working dilutions should be determined experimentally by the investigator. Prepare working dilution immediately before use.

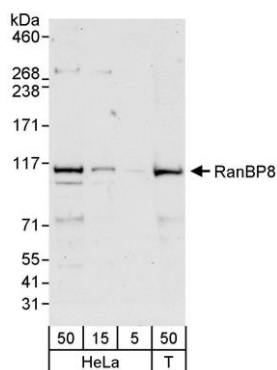
Western Blot 1:2,000 – 1:10,000

Immunoprecipitation Not recommended

ADDITIONAL INFO <https://www.bethyl.com/product/A301-804A-T>

Use the link above to view SDS, a current list of citations, and other product specific information.

This document certifies that this product has met all of the quality control standards defined by Bethyl Laboratories, Inc.
Michael Spencer, PhD Date: June 6, 2022



Detection of human RanBP8 by western blot. *Samples:* Whole cell lysate from HeLa (5, 15 and 50 µg) and HEK293T (T; 50 µg) cells. *Antibody:* Affinity purified rabbit anti-RanBP8 antibody A301-804A used for WB at 0.4 µg/ml. *Detection:* Chemiluminescence with an exposure time of 30 seconds.