

JARID1B Antibody

Rabbit Polyclonal

Antigen Affinity Purified

Catalog No. A301-813A

Lot No. A301-813A-1

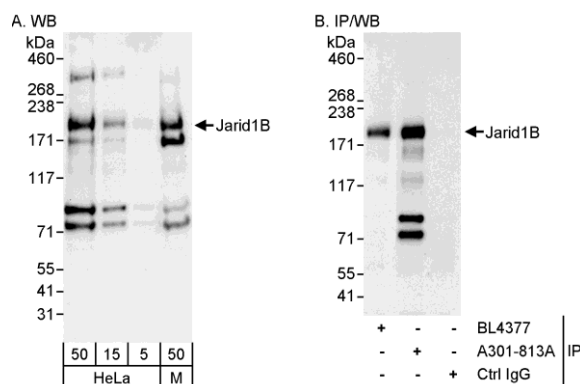
Protein ID NP_006609.3

Gene ID 10765

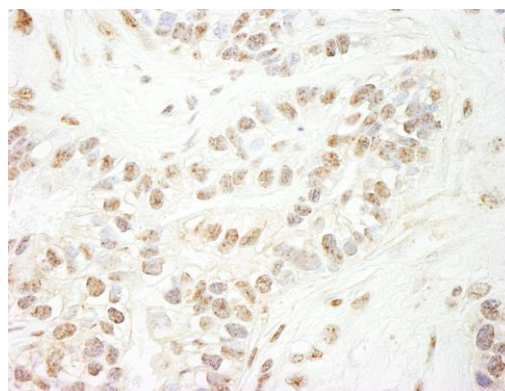


APPLICATIONS	WB, IP, IHC-P, IF								
REACTIVITY TESTED	Human, Mouse								
PRESUMED REACTIVITY	Based on 100% sequence identity, this antibody is predicted to react with Dog, Panda, Orangutan, Rhesus Monkey, Gorilla, Chimpanzee, White-tufted-ear marmoset, Crab-eating macaque, African elephant, Small-eared galago and Northern white-cheeked gibbon.								
ISOTYPE	IgG								
AMOUNT	0.1 ml at 1 mg/ml								
STORAGE/SHELF LIFE	2 - 8° C / 1 year from date of receipt								
PHYSICAL STATE	Liquid								
BUFFER	Tris-citrate/phosphate buffer, pH 7 to 8 containing 0.09% Sodium Azide								
ORIGIN	USA								
PRODUCTION PROCEDURES	<p>Antibody was affinity purified using an epitope specific to JARID1B immobilized on solid support.</p> <p>The epitope recognized by A301-813A maps to a region between residue 1494 and 1544 of human Jumonji, AT rich interactive domain 1B using the numbering given in entry NP_006609.3 (GeneID 10765).</p> <p>Immunoglobulin concentration was determined by extinction coefficient: absorbance at 280 nm of 1.4 equals 1.0 mg of IgG.</p>								
APPLICATIONS	<p>Centrifuge tube to remove product from lid. Optimal working dilutions should be determined experimentally by the investigator. Prepare working dilution immediately before use.</p> <table><tr><td>Western Blot</td><td>1:2,000 to 1:10,000</td></tr><tr><td>Immunoprecipitation</td><td>2 to 5 µg/mg lysate</td></tr><tr><td>Immunohistochemistry</td><td>1:500 to 1:2,000. Epitope retrieval with citrate buffer pH6.0 is recommended for FFPE tissue sections.</td></tr><tr><td>Immunofluorescence</td><td>1:250 to 1:1,000.</td></tr></table>	Western Blot	1:2,000 to 1:10,000	Immunoprecipitation	2 to 5 µg/mg lysate	Immunohistochemistry	1:500 to 1:2,000. Epitope retrieval with citrate buffer pH6.0 is recommended for FFPE tissue sections.	Immunofluorescence	1:250 to 1:1,000.
Western Blot	1:2,000 to 1:10,000								
Immunoprecipitation	2 to 5 µg/mg lysate								
Immunohistochemistry	1:500 to 1:2,000. Epitope retrieval with citrate buffer pH6.0 is recommended for FFPE tissue sections.								
Immunofluorescence	1:250 to 1:1,000.								
APPLICATION NOTES	<p>Validation by IP/Western Blot was performed using a 4-8% SDS-PAGE gel and ReliaBLOT® Reagents (Cat. No. WB120).</p> <p>IHC validation was performed using Immunohistochemistry Accessory Kit (Cat. # IHC-101).</p>								
IHC HUMAN CONTROLS	Breast Carcinoma, Prostate Carcinoma								
ADDITIONAL INFO	<p>http://www.bethyl.com/product/A301-813A</p> <p>Use the link above to view SDS, a current list of citations, and other product specific information.</p>								

JARID1B Antibody: A301-813A



Detection of Human and Mouse Jarid1B by Western Blot (h&m) and Immunoprecipitation (h). *Samples:* Whole cell lysate from HeLa (5, 15 and 50 µg for WB; 1 mg for IP, 20% of IP loaded) and NIH3T3 (M; 50 µg) cells. *Antibody:* Affinity purified rabbit anti-Jarid1B antibody A301-813A used for WB at 0.1 µg/ml (A) and 1 µg/ml (B) and used for IP at 3 µg/mg lysate. Jarid1B was also immunoprecipitated by rabbit anti-Jarid1B antibody BL4377, which recognizes an upstream epitope. *Detection:* Chemiluminescence with exposure times of 10 seconds (A and B).



Detection of Human Jarid1B by Immunohistochemistry. *Sample:* FFPE section of human breast carcinoma. *Antibody:* Affinity purified rabbit anti-Jarid1B (Cat. No. A301-813A Lot1) used at a dilution of 1:1,000 (1µg/ml). *Detection:* DAB