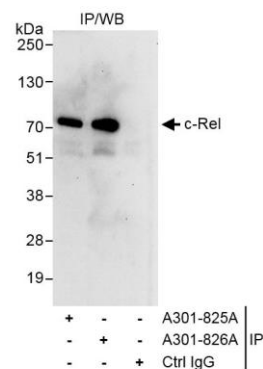


Detection of human c-Rel by western blot. *Samples:* Whole cell lysate from HeLa (50, 15, 5 μ g) and HEK293T (T; 50 μ g) cells. *Antibodies:* Affinity purified rabbit anti-c-Rel antibody A301-826A (lot A301-826A-1) used for WB at 0.4 μ g/ml. *Detection:* Chemiluminescence with exposure time of 30 seconds.



Detection of human c-Rel by western blot of immunoprecipitates. *Samples:* Whole cell lysate (1 mg for IP, 20% of IP loaded) from HeLa cells. *Antibodies:* Affinity purified rabbit anti-c-Rel antibody A301-826A (lot A301-826A-1) used for IP at 3 μ g/mg lysate. c-Rel was also immunoprecipitated by rabbit anti-c-Rel antibody A301-825A, which recognizes an upstream epitope. For blotting immunoprecipitated c-Rel, A301-826A was used at 1.0 μ g/ml. *Detection:* Chemiluminescence with exposure time of 30 seconds.