

IKK-beta Antibody

Rabbit Polyclonal

Antigen Affinity Purified

Protein ID NP_001547.1

Catalog No. A301-827A

GeneID 3551

Lot No. A301-827A-1



APPLICATIONS	WB, IP
SPECIES REACTIVITY	Human
AMOUNT	100 µl
CONCENTRATION	200 µg/ml
STORAGE/SHELF LIFE	2 - 8° C / 1 year from date of receipt
PHYSICAL STATE	Liquid
BUFFER	Tris-buffered Saline containing 0.1% BSA and 0.09% Sodium Azide
ISOTYPE	IgG
ORIGIN	USA
PRODUCTION PROCEDURES	Antibody was affinity purified using an epitope specific to IKK-beta immobilized on solid support.

The epitope recognized by A301-827A maps to a region between residue 706 and 756 of human inhibitor of kappa light polypeptide gene enhancer in B-cells, kinase beta using the numbering given in entry NP_001547.1 (GeneID 3551).

Immunoglobulin concentration was determined by extinction coefficient: absorbance at 280 nm of 1.4 equals 1.0 mg of IgG.

APPLICATIONS Centrifuge tube to remove product from lid. Optimal working dilutions should be determined experimentally by the investigator. Prepare working dilution immediately before use.

Western Blot 1:2,000 - 1:10,000

Immunoprecipitation 2 - 5 µg/mg lysate

APPLICATION NOTES Western blot of immunoprecipitates performed using Normal Pig Serum (Cat. No. S100-020), Goat anti-Rabbit Light Chain HRP Conjugate (Cat. No. A120-113P) and 4-8% SDS-PAGE (link to IP-western blot protocol in Additional Info section below).

Western blot of lysates performed using standard western blot reagents and 4-8% SDS-PAGE.

ADDITIONAL INFO <https://www.bethyl.com/product/A301-827A>

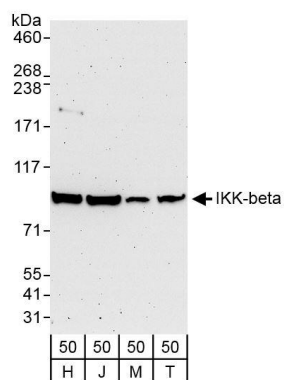
Use the link above to view SDS, a current list of citations, and other product specific information.

IP-western blot protocol https://www.bethyl.com/content/protocol_IP_WB

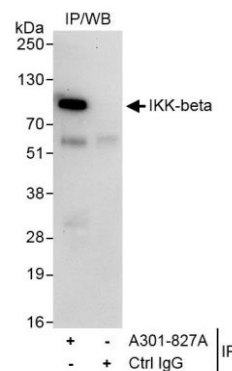
This document certifies that this product has met all of the quality control standards defined by Bethyl Laboratories, Inc.

Eric McIntush, PhD | Chief Scientific Officer

Date: October 22, 2019



Detection of human IKK-beta by western blot. *Samples:* Whole cell lysate from HeLa (H; 50 µg), Jurkat (J; 50 µg), MCF-7 (M; 50 µg), and HEK293T (T; 50 µg) cells. *Antibodies:* Affinity purified rabbit anti-IKK-beta antibody A301-827A (lot A301-827A-1) used for WB at 0.04 µg/ml. *Detection:* Chemiluminescence with exposure times of 3 minute.



Detection of human IKK-beta by western blot of immunoprecipitates. *Samples:* Whole cell lysate (1 mg for IP, 20% of IP loaded) from Jurkat cells. *Antibodies:* Affinity purified rabbit anti-IKK-beta antibody A301-827A (lot A301-827A-1) used for IP at 3 µg/mg lysate. For blotting immunoprecipitated IKK-beta, A301-827A was used at 1.0 µg/ml. *Detection:* Chemiluminescence with exposure time of 30 seconds.