

# I kappa B-beta Antibody

Rabbit Polyclonal

Antigen Affinity Purified

Protein ID NP\_002494.2

Catalog No. A301-828A

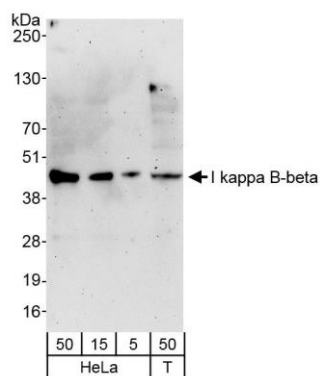
GeneID 4793

Lot No. A301-828A-1



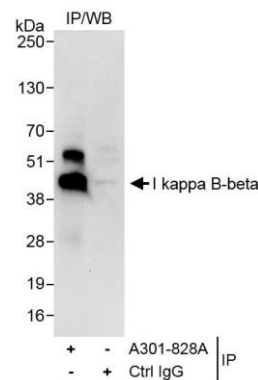
<b>APPLICATIONS</b>	WB, IP
<b>SPECIES REACTIVITY</b>	Human
<b>AMOUNT</b>	100 µl
<b>CONCENTRATION</b>	200 µg/ml
<b>STORAGE/SHELF LIFE</b>	2 – 8° C / 1 year from date of receipt
<b>PHYSICAL STATE</b>	Liquid
<b>BUFFER</b>	Tris-buffered Saline containing 0.1% BSA and 0.09% Sodium Azide
<b>ISOTYPE</b>	IgG
<b>ORIGIN</b>	USA
<b>PRODUCTION PROCEDURES</b>	Antibody was affinity purified using an epitope specific to I kappa B-beta immobilized on solid support.  The epitope recognized by A301-828A maps to a region between residue 306 and 356 of human nuclear factor of kappa light polypeptide gene enhancer in B-cells inhibitor, beta using the numbering given in entry NP_002494.2 (GeneID 4793).  Immunoglobulin concentration was determined by extinction coefficient: absorbance at 280 nm of 1.4 equals 1.0 mg of IgG.
<b>APPLICATIONS</b>	Centrifuge tube to remove product from lid. Optimal working dilutions should be determined experimentally by the investigator. Prepare working dilution immediately before use.  Western Blot 1:2,000 – 1:10,000 Immunoprecipitation 2 – 5 µg/mg lysate
<b>APPLICATION NOTES</b>	Western blot of immunoprecipitates performed using Normal Pig Serum (Cat. No. S100-020), Goat anti-Rabbit Light Chain HRP Conjugate (Cat. No. A120-113P) and 4-20% SDS-PAGE (link to IP-western blot protocol in Additional Info section below).  Western blot of lysates performed using standard western blot reagents and 4-20% SDS-PAGE.
<b>ADDITIONAL INFO</b>	<a href="https://www.bethyl.com/product/A301-828A">https://www.bethyl.com/product/A301-828A</a> Use the link above to view SDS, a current list of citations, and other product specific information. IP-western blot protocol <a href="https://www.bethyl.com/content/protocol_IP_WB">https://www.bethyl.com/content/protocol_IP_WB</a>

This document certifies that this product has met all of the quality control standards defined by Bethyl Laboratories, Inc.  
Eric McIntush, PhD | Chief Scientific Officer Date: October 22, 2019



#### Detection of human I kappa B-beta by western blot.

**Samples:** Whole cell lysate from HeLa (50  $\mu$ g) and HEK293T (T; 50  $\mu$ g) cells. **Antibodies:** Affinity purified rabbit anti-I kappa B-beta antibody A301-828A (lot A301-828A-1) used for WB at 0.04  $\mu$ g/ml. **Detection:** Chemiluminescence with exposure time of 3 minutes.



#### Detection of human I kappa B-beta by western blot of immunoprecipitates.

**Samples:** Whole cell lysate (1 mg for IP, 20% of IP loaded) from HeLa cells. **Antibodies:** Affinity purified rabbit anti-I kappa B-beta antibody A301-828A (lot A301-828A-1) used for IP at 3  $\mu$ g/mg lysate. For blotting immunoprecipitated I kappa B-beta, A301-828A was used at 0.4  $\mu$ g/ml. **Detection:** Chemiluminescence with exposure time of 30 seconds.