

Optineurin Antibody

Rabbit Polyclonal

Antigen Affinity Purified

Protein ID NP_068815.2

Catalog No. A301-831A-T

GenelD 10133

Lot No. A301-831A-T-2

APPLICATIONS	WB, IP
SPECIES REACTIVITY	Human
PRESUMED REACTIVITY	Based on 100% sequence identity, this antibody is predicted to react with Orangutan
AMOUNT	10 µl
CONCENTRATION	1000 µg/ml
STORAGE/SHELF LIFE	2 – 8°C / 1 year from date of receipt
PHYSICAL STATE	Liquid
BUFFER	Tris-citrate/phosphate buffer, pH 7 to 8 containing 0.09% Sodium Azide
ISOTYPE	IgG
ORIGIN	USA
PRODUCTION PROCEDURES	Antibody was affinity purified using an epitope specific to Optineurin immobilized on solid support.

The epitope recognized by A301-831A-T maps to a region between residue 504 and 554 of human optineurin using the numbering given in entry NP_068815.2 (GenelD 10133).

APPLICATIONS Centrifuge tube to remove product from lid. Optimal working dilutions should be determined experimentally by the investigator. Prepare working dilution immediately before use.

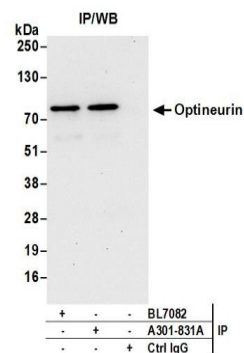
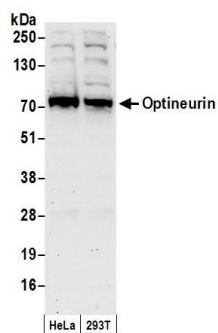
Western Blot 1:2,000 – 1:10,000

Immunoprecipitation 2 – 5 µg/mg lysate

ADDITIONAL INFO <https://www.bethyl.com/product/A301-831A-T>

Use the link above to view SDS, a current list of citations, and other product specific information.
IP-western blot protocol: https://www.bethyl.com/content/protocol_IP_WB

This document certifies that this product has met all of the quality control standards defined by Bethyl Laboratories, Inc.
Michael Spencer, PhD Date: June 6, 2022



Detection of human Optineurin by western blot. Samples: Whole cell lysate (50 µg) from HeLa and HEK293T cells prepared using NETN lysis buffer. **Antibodies:** Affinity purified rabbit anti-Optineurin antibody A301-831A (lot A301-831A-2) used for WB at 0.4 µg/ml. **Detection:** Chemiluminescence with an exposure time of 30 seconds.

Detection of human Optineurin by western blot of immunoprecipitates. Samples: Whole cell lysate (0.5 or 1.0 mg per IP reaction; 20% of IP loaded) from HeLa cells prepared using NETN lysis buffer. **Antibodies:** Affinity purified rabbit anti-Optineurin antibody A301-831A (lot A301-831A-2) used for IP at 6 µg per reaction. Optineurin was also immunoprecipitated by rabbit anti-Optineurin antibody BL7082. For blotting immunoprecipitated Optineurin, A301-831A was used at 1 µg/ml. **Detection:** Chemiluminescence with an exposure time of 30 seconds.