

# GCN1L1 Antibody

Rabbit Polyclonal

Antigen Affinity Purified

Protein ID NP\_006827.1

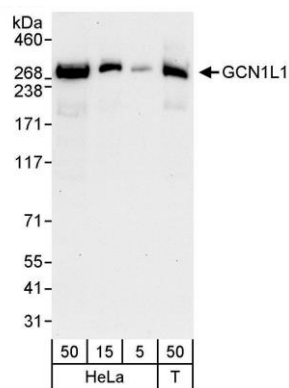
Catalog No. A301-843A-T

GeneID 10985

Lot No. A301-843A-T-1



<b>APPLICATIONS</b>	WB, IP
<b>SPECIES REACTIVITY</b>	Human, Mouse, Rat
<b>ISOTYPE</b>	IgG
<b>AMOUNT</b>	20 µl (2 blots)
<b>STORAGE/SHELF LIFE</b>	2 – 8° C / 1 year from date of receipt
<b>PHYSICAL STATE</b>	Liquid
<b>BUFFER</b>	Tris-buffered Saline containing 0.1% BSA and 0.09% Sodium Azide
<b>ORIGIN</b>	USA
<b>PRODUCTION PROCEDURES</b>	Antibody was affinity purified using an epitope specific to GCN1L1 immobilized on solid support.  The epitope recognized by A301-843A-T maps to a region between residue 2621 and 2671 of human general control of amino-acid synthesis 1-like 1 using the numbering given in entry NP_006827.1 (GeneID 10985).
<b>APPLICATIONS</b>	Centrifuge tube to remove product from lid. Optimal working dilutions should be determined experimentally by the investigator. Prepare working dilution immediately before use.  Western Blot 1:1000  Immunoprecipitation The antibody contained within A301-843A-T has been qualified for use in immunoprecipitation; however, we recommend using the alternative formulation of this antibody found as product A301-843A.
<b>APPLICATION NOTES</b>	Western blot of immunoprecipitates performed using ReliaBLOT® Reagents (Cat. No. WB120) and 4-8% SDS-PAGE. Western blot of lysates performed using standard western blot reagents and 4-8% SDS-PAGE.
<b>ADDITIONAL INFO</b>	<a href="http://www.bethyl.com/product/A301-843A-T">http://www.bethyl.com/product/A301-843A-T</a>  Use the link above to view SDS, a current list of citations, and other product specific information.



**Detection of human GCN1L1 by western blot.** *Samples:* Whole cell lysate from HeLa (5, 15 and 50 µg) and 293T (T; 50 µg) cells. *Antibody:* Affinity purified rabbit anti-GCN1L1 antibody A301-843A-T used at 1:1000. *Detection:* Chemiluminescence with an exposure time of 30 seconds.