

# RPC2 Antibody

Rabbit Polyclonal

Antigen Affinity Purified

Protein ID NP\_060552.3

Catalog No. A301-855A

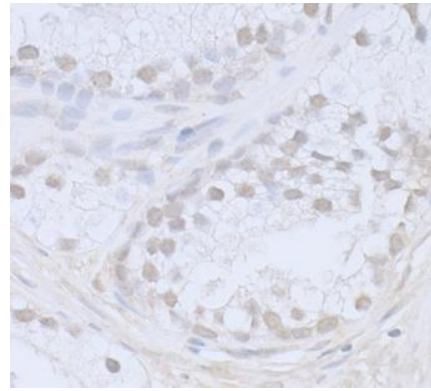
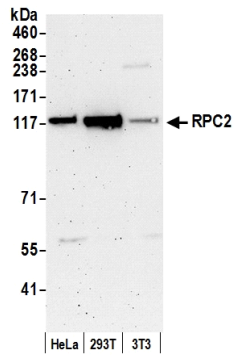
Gene ID 55703

Lot No. A301-855A-2



<b>APPLICATIONS</b>	WB, IP, IHC-P, IF								
<b>REACTIVITY TESTED</b>	Human								
<b>PRESUMED REACTIVITY</b>	Based on 100% sequence identity, this antibody is predicted to react with Bovine, Dog, Horse, Pig, Panda, Orangutan, Rhesus Monkey, Gorilla, Chimpanzee, Duckbill platypus, Tasmanian devil, White-tufted-ear marmoset, Crab-eating macaque, African elephant, Naked mole rat and Northern white-cheeked gibbon.								
<b>ISOTYPE</b>	IgG								
<b>AMOUNT</b>	100 µl at 0.2 mg/ml								
<b>STORAGE/SHELF LIFE</b>	2 - 8° C / 1 year from date of receipt								
<b>PHYSICAL STATE</b>	Liquid								
<b>BUFFER</b>	Tris-buffered Saline with 0.1% BSA containing 0.09% Sodium Azide								
<b>ORIGIN</b>	USA								
<b>PRODUCTION PROCEDURES</b>	<p>Antibody was affinity purified using an epitope specific to RPC2 immobilized on solid support.</p> <p>The epitope recognized by A301-855A maps to a region between residue 1083 and 1133 of human RNA polymerase III subunit C2 using the numbering given in entry NP_060552.3 (GeneID 55703).</p> <p>Immunoglobulin concentration was determined by extinction coefficient: absorbance at 280 nm of 1.4 equals 1.0 mg of IgG.</p>								
<b>APPLICATIONS</b>	<p>Centrifuge tube to remove product from lid. Optimal working dilutions should be determined experimentally by the investigator. Prepare working dilution immediately before use.</p> <table><tr><td>Western Blot</td><td>1:2,000 to 1:10,000</td></tr><tr><td>Immunoprecipitation</td><td>2 to 10 µg/mg lysate</td></tr><tr><td>Immunohistochemistry</td><td>1:200 to 1:1,000. Epitope retrieval with citrate buffer pH6.0 is recommended for FFPE tissue sections.</td></tr><tr><td>Immunofluorescence</td><td>1:100 to 1:500.</td></tr></table>	Western Blot	1:2,000 to 1:10,000	Immunoprecipitation	2 to 10 µg/mg lysate	Immunohistochemistry	1:200 to 1:1,000. Epitope retrieval with citrate buffer pH6.0 is recommended for FFPE tissue sections.	Immunofluorescence	1:100 to 1:500.
Western Blot	1:2,000 to 1:10,000								
Immunoprecipitation	2 to 10 µg/mg lysate								
Immunohistochemistry	1:200 to 1:1,000. Epitope retrieval with citrate buffer pH6.0 is recommended for FFPE tissue sections.								
Immunofluorescence	1:100 to 1:500.								
<b>APPLICATION NOTES</b>	<p>Validation by IP/Western Blot was performed using a 4-8% SDS-PAGE gel and ReliaBLOT® Reagents (Cat. No. WB120).</p> <p>IHC validation was performed using Immunohistochemistry Accessory Kit (Cat. # IHC-101).</p>								
<b>IHC HUMAN CONTROLS</b>	Breast Carcinoma, Prostate Carcinoma, Testicular Seminoma								
<b>ADDITIONAL INFO</b>	<p><a href="http://www.bethyl.com/product/A301-855A">http://www.bethyl.com/product/A301-855A</a></p> <p>Use the link above to view SDS, a current list of citations, and other product specific information.</p>								

# RPC2 Antibody: A301-855A

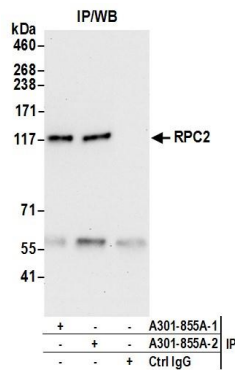


## Detection of Human and Mouse RPC2 by Western Blot.

**Samples:** Whole cell lysate (50 µg) from HeLa, 293T, and mouse NIH3T3 cells prepared using NETN lysis buffer. **Antibody:** Affinity purified rabbit anti-RPC2 antibody A301-855A (lot A301-855A-2) used for WB at 0.1 µg/ml. **Detection:** Chemiluminescence with an exposure time of 3 minutes.

## Detection of Human RPC2 by Immunohistochemistry.

**Sample:** FFPE section of human prostate carcinoma. **Antibody:** Affinity purified rabbit anti-RPC2 (Cat. No. A301-855A Lot2) used at a dilution of 1:1,000 (0.2 µg/ml). **Detection:** DAB



## Detection of Human RPC2 by Western Blot of Immunoprecipitates.

**Samples:** Whole cell lysate (0.5 or 1.0 mg per IP reaction; 20% of IP loaded) from HeLa cells prepared using NETN lysis buffer. **Antibodies:** Affinity purified rabbit anti-RPC2 antibody A301-855A (lot A301-855A-2) used for IP at 6 µg per reaction. RPC2 was also immunoprecipitated by a previous lot of this antibody (lot A301-855A-1). For blotting immunoprecipitated RPC2, A301-855A was used at 1 µg/ml. **Detection:** Chemiluminescence with an exposure time of 30 seconds.