

# Notch1 Antibody

Rabbit Polyclonal

Antigen Affinity Purified

Protein ID NP\_060087.3

Catalog No. A301-895A

GeneID 4851

Lot No. A301-895A-1



<b>APPLICATIONS</b>	WB, IP, IHC
<b>SPECIES REACTIVITY</b>	Human
<b>AMOUNT</b>	100 µl
<b>CONCENTRATION</b>	1000 µg/ml
<b>STORAGE/SHELF LIFE</b>	2 - 8° C / 1 year from date of receipt
<b>PHYSICAL STATE</b>	Liquid
<b>BUFFER</b>	Tris-citrate/phosphate buffer, pH 7 to 8 containing 0.09% Sodium Azide
<b>ISOTYPE</b>	IgG
<b>ORIGIN</b>	USA
<b>PRODUCTION PROCEDURES</b>	Antibody was affinity purified using an epitope specific to Notch1 immobilized on solid support.

The epitope recognized by A301-895A maps to a region between residue 2505 and 2555 of human Notch ortholog 1, translocation-associated using the numbering given in entry NP\_060087.3 (GeneID 4851).

Immunoglobulin concentration was determined by extinction coefficient: absorbance at 280 nm of 1.4 equals 1.0 mg of IgG.

**APPLICATIONS** Centrifuge tube to remove product from lid. Optimal working dilutions should be determined experimentally by the investigator. Prepare working dilution immediately before use.

Western Blot 1:2,000 - 1:10,000

Immunoprecipitation 2 - 5 µg/mg lysate

Immunohistochemistry 1:500 - 1:2,000. Epitope retrieval with citrate buffer pH 6.0 is recommended for FFPE tissue sections.

**APPLICATION NOTES** Western blot of immunoprecipitates performed using Normal Pig Serum (Cat. No. S100-020), Goat anti-Rabbit Light Chain HRP Conjugate (Cat. No. A120-113P) and 4-8% SDS-PAGE (link to IP-western blot protocol in Additional Info section below).

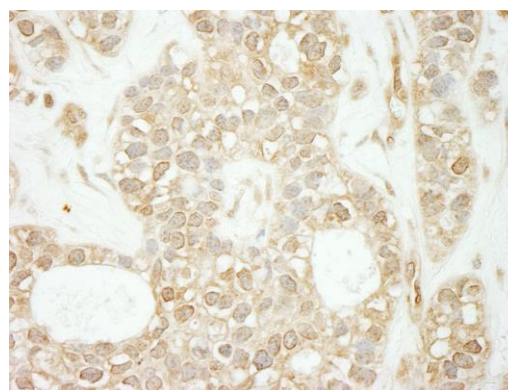
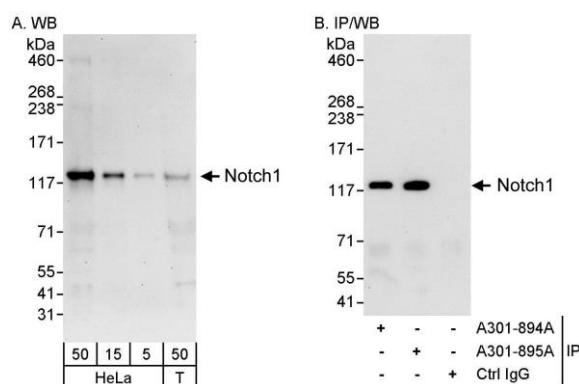
**IHC HUMAN CONTROLS** Western blot of lysates performed using standard western blot reagents and 4-8% SDS-PAGE. Breast Carcinoma, Ovarian Carcinoma

**ADDITIONAL INFO** <https://www.bethyl.com/product/A301-895A>

Use the link above to view SDS, a current list of citations, and other product specific information.

IP-western blot protocol: [https://www.bethyl.com/content/protocol\\_IP\\_WB](https://www.bethyl.com/content/protocol_IP_WB)

This document certifies that this product has met all of the quality control standards defined by Bethyl Laboratories, Inc.  
Eric McIntush, PhD | Chief Scientific Officer Date: June 21, 2019



**Detection of human Notch1 by western blot and immunoprecipitation.** *Samples:* Whole cell lysate from HeLa (5, 15 and 50 µg for WB; 1 mg for IP, 20% of IP loaded) and HEK293T (T; 50 µg) cells. *Antibodies:* Affinity purified rabbit anti-Notch1 antibody A301-895A used for WB at 0.1 µg/ml (A) and 1 µg/ml (B) and used for IP at 3 µg/mg lysate. Notch1 was also immunoprecipitated by rabbit anti-Notch1 antibody A301-894A, which recognizes an upstream epitope. *Detection:* Chemiluminescence with exposure times of 30 seconds (A and B).

**Detection of human Notch1 by immunohistochemistry.** *Sample:* FFPE section of human breast carcinoma. *Antibody:* Affinity purified rabbit anti-Notch1 (Cat. No. A301-895A Lot1) used at a dilution of 1:1,000 (1 µg/ml). *Detection:* DAB