

Notch1 Antibody

Rabbit Polyclonal

Antigen Affinity Purified Protein ID NP_060087.3
Catalog No. A301-895A-M GeneID 4851
Lot No. A301-895A-M-2



APPLICATIONS WB, IP, IHC
SPECIES REACTIVITY Human
AMOUNT 100 µl (10 blots)
CONCENTRATION 40 µg/ml
STORAGE/SHELF LIFE 2 – 8° C / 1 year from date of receipt
PHYSICAL STATE Liquid
BUFFER Tris-buffered Saline containing 0.1% BSA and 0.09% Sodium Azide
ISOTYPE IgG
ORIGIN USA
PRODUCTION PROCEDURES Antibody was affinity purified using an epitope specific to Notch1 immobilized on solid support.

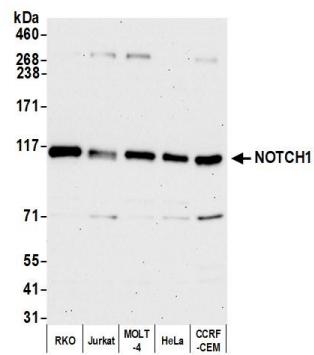
The epitope recognized by A301-895A-M maps to a region between residue 2505 and 2555 of human Notch ortholog 1, translocation-associated using the numbering given in entry NP_060087.3 (GeneID 4851).

APPLICATIONS Centrifuge tube to remove product from lid. Optimal working dilutions should be determined experimentally by the investigator. Prepare working dilution immediately before use.

Western Blot 1:1000
Immunoprecipitation The antibody contained within A301-895A-M has been qualified for use in immunoprecipitation; however, we recommend using the alternative formulation of this antibody found as product A301-895A.
Immunohistochemistry 1:100 to 1:400. Epitope retrieval with citrate buffer pH6.0 is recommended for FFPE tissue sections.

ADDITIONAL INFO <https://www.bethyl.com/product/A301-895A-M>
Use the link above to view SDS, a current list of citations, and other product specific information.
IP-western blot protocol: https://www.bethyl.com/content/protocol_IP_WB

This document certifies that this product has met all of the quality control standards defined by Bethyl Laboratories, Inc.
Eric McIntush, PhD | Chief Scientific Officer Date: October 15, 2020



Detection of human NOTCH1 by western blot. *Samples:* Whole cell lysate (10 μ g) from RKO, Jurkat, MOLT-4, HeLa, and CCRF-CEM cells prepared using NETN lysis buffer. ***Antibody:*** Affinity purified rabbit anti-NOTCH1 antibody A301-895A-M (lot A301-895A-M-2) used for WB at 1:1,000. ***Detection:*** Chemiluminescence with an exposure time of 30 seconds.