

# ZEB1 Antibody

Rabbit Polyclonal

Antigen Affinity Purified

Catalog No. A301-922A

Lot No. A301-922A-1

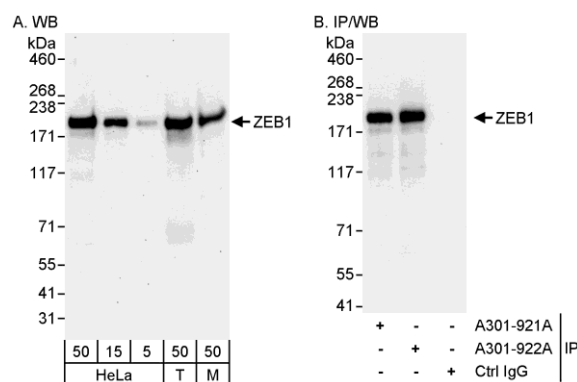
Protein ID NP\_110378.3

Gene ID 6935

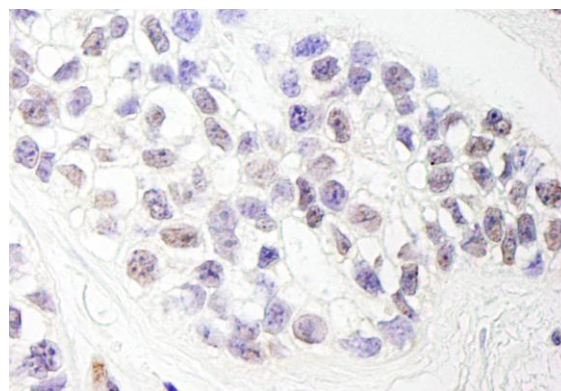


<b>APPLICATIONS</b>	WB, IP, IHC-P, IF								
<b>REACTIVITY TESTED</b>	Human, Mouse								
<b>PRESUMED REACTIVITY</b>	Based on 100% sequence identity, this antibody is predicted to react with Orangutan, Rhesus Monkey, Gorilla, Chimpanzee, White-tufted-ear marmoset, Crab-eating macaque and Northern white-cheeked gibbon.								
<b>ISOTYPE</b>	IgG								
<b>AMOUNT</b>	0.1 ml at 0.2 mg/ml								
<b>STORAGE/SHELF LIFE</b>	2 - 8° C / 1 year from date of receipt								
<b>PHYSICAL STATE</b>	Liquid								
<b>BUFFER</b>	Tris-buffered Saline with 0.1% BSA containing 0.09% Sodium Azide								
<b>ORIGIN</b>	USA								
<b>PRODUCTION PROCEDURES</b>	<p>Antibody was affinity purified using an epitope specific to ZEB1 immobilized on solid support.</p> <p>The epitope recognized by A301-922A maps to a region between residue 1074 and 1124 of human zinc finger E-box binding homeobox 1 using the numbering given in entry NP_110378.3 (GeneID 6935).</p> <p>Immunoglobulin concentration was determined by extinction coefficient: absorbance at 280 nm of 1.4 equals 1.0 mg of IgG.</p>								
<b>APPLICATIONS</b>	<p>Centrifuge tube to remove product from lid. Optimal working dilutions should be determined experimentally by the investigator. Prepare working dilution immediately before use.</p> <table><tr><td>Western Blot</td><td>1:2,000 to 1:10,000</td></tr><tr><td>Immunoprecipitation</td><td>2 to 5 µg/mg lysate</td></tr><tr><td>Immunohistochemistry</td><td>1:100 to 1:1,000. Epitope retrieval with citrate buffer pH6.0 is recommended for FFPE tissue sections.</td></tr><tr><td>Immunofluorescence</td><td>1:50 to 1:500.</td></tr></table>	Western Blot	1:2,000 to 1:10,000	Immunoprecipitation	2 to 5 µg/mg lysate	Immunohistochemistry	1:100 to 1:1,000. Epitope retrieval with citrate buffer pH6.0 is recommended for FFPE tissue sections.	Immunofluorescence	1:50 to 1:500.
Western Blot	1:2,000 to 1:10,000								
Immunoprecipitation	2 to 5 µg/mg lysate								
Immunohistochemistry	1:100 to 1:1,000. Epitope retrieval with citrate buffer pH6.0 is recommended for FFPE tissue sections.								
Immunofluorescence	1:50 to 1:500.								
<b>APPLICATION NOTES</b>	<p>Validation by IP/Western Blot was performed using a 4-8% SDS-PAGE gel and ReliaBLOT® Reagents (Cat. No. WB120).</p> <p>IHC validation was performed using Immunohistochemistry Accessory Kit (Cat. # IHC-101).</p>								
<b>IHC HUMAN CONTROLS</b>	Breast Carcinoma, Prostate Carcinoma								
<b>IHC MOUSE CONTROLS</b>	Teratoma								
<b>ADDITIONAL INFO</b>	<p><a href="http://www.bethyl.com/product/A301-922A">http://www.bethyl.com/product/A301-922A</a></p> <p>Use the link above to view SDS, a current list of citations, and other product specific information.</p>								

## ZEB1 Antibody: A301-922A



**Detection of Human and Mouse ZEB1 by Western Blot (h&m) and Immunoprecipitation (h).** *Samples:* Whole cell lysate from HeLa (5, 15 and 50  $\mu$ g for WB; 1 mg for IP, 20% of IP loaded), 293T (T; 50  $\mu$ g), and mouse NIH3T3 (M; 50  $\mu$ g) cells. *Antibodies:* Affinity purified rabbit anti-ZEB1 antibody A301-922A used for WB at 0.04  $\mu$ g/ml (A) and 1  $\mu$ g/ml (B) and used for IP at 3  $\mu$ g/mg lysate. ZEB1 was also immunoprecipitated by rabbit anti-ZEB1 antibody A301-921A, which recognizes an upstream epitope. *Detection:* Chemiluminescence with exposure times of 30 seconds (A) and 3 seconds (B).



**Detection of Human ZEB1 by Immunohistochemistry.** *Sample:* FFPE section of human breast carcinoma. *Antibody:* Affinity purified rabbit anti-ZEB1 (Cat. No. A301-922A Lot1) used at a dilution of 1:1,000 (0.2 $\mu$ g/ml). *Detection:* DAB