

# Dicer Antibody

Rabbit Polyclonal

Antigen Affinity Purified

Protein ID NP\_085124.2

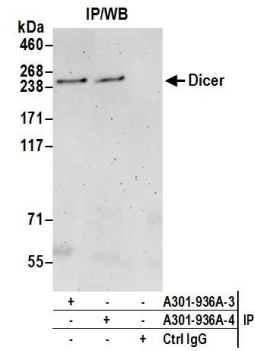
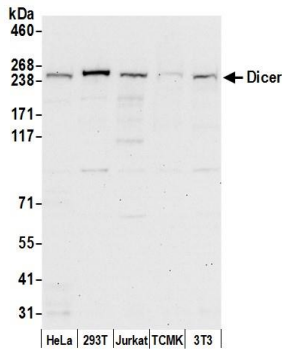
Catalog No. A301-936A

GeneID 23405

Lot No. A301-936A-4



<b>APPLICATIONS</b>	WB, IP
<b>SPECIES REACTIVITY</b>	Human, Mouse
<b>ISOTYPE</b>	IgG
<b>AMOUNT</b>	100 µl at 1 mg/ml
<b>STORAGE/SHELF LIFE</b>	2 - 8° C / 1 year from date of receipt
<b>PHYSICAL STATE</b>	Liquid
<b>BUFFER</b>	Tris-citrate/phosphate buffer, pH 7 to 8 containing 0.09% Sodium Azide
<b>ORIGIN</b>	USA
<b>PRODUCTION PROCEDURES</b>	<p>Antibody was affinity purified using an epitope specific to Dicer immobilized on solid support.</p> <p>The epitope recognized by A301-936A maps to a region between residue 600 and 650 of human double-stranded RNA-specific endoribonuclease; dicer1 using the numbering given in entry NP_085124.2 (GeneID 23405).</p> <p>Immunoglobulin concentration was determined by extinction coefficient: absorbance at 280 nm of 1.4 equals 1.0 mg of IgG.</p>
<b>APPLICATIONS</b>	<p>Centrifuge tube to remove product from lid. Optimal working dilutions should be determined experimentally by the investigator. Prepare working dilution immediately before use.</p> <p>Western Blot 1:2,000 - 1:10,000</p> <p>Immunoprecipitation 2 - 10 µg/mg lysate</p>
<b>APPLICATION NOTES</b>	<p>Western blot of immunoprecipitates performed using ReliaBLOT® Reagents (Cat. No. WB120) and 4-8% SDS-PAGE.</p> <p>Western blot of lysates performed using standard western blot reagents and 4-8% SDS-PAGE.</p>
<b>ADDITIONAL INFO</b>	<p><a href="http://www.bethyl.com/product/A301-936A">http://www.bethyl.com/product/A301-936A</a></p> <p>Use the link above to view SDS, a current list of citations, and other product specific information.</p>



**Detection of human and mouse Dicer by western blot.**  
*Samples:* Whole cell lysate (50 µg) from HeLa, 293T, Jurkat, mouse TCMK-1, and mouse NIH3T3 cells prepared using NETN lysis buffer. *Antibody:* Affinity purified rabbit anti-Dicer antibody A301-936A (lot A301-936A-4) used for WB at 0.5 µg/ml. *Detection:* Chemiluminescence with an exposure time of 30 seconds.

**Detection of human Dicer by western blot of immunoprecipitates.**  
*Samples:* Whole cell lysate (0.5 or 1.0 mg per IP reaction; 20% of IP loaded) from 293T cells prepared using NETN lysis buffer. *Antibodies:* Affinity purified rabbit anti-Dicer antibody A301-936A (lot A301-936A-4) used for IP at 6 µg per reaction. Dicer was also immunoprecipitated by a previous lot of this antibody A301-936A-3. For blotting immunoprecipitated Dicer, A301-936A was used at 0.4 µg/ml. *Detection:* Chemiluminescence with an exposure time of 3 minutes.