

PDZ-GEF1 Antibody

Rabbit Polyclonal

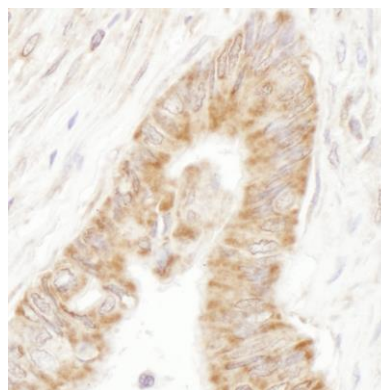
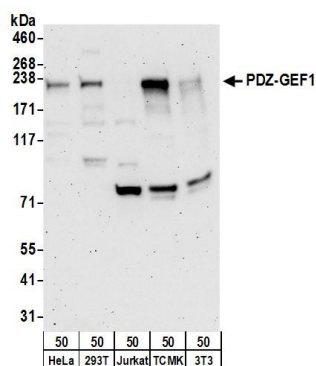
Antigen Affinity Purified Protein ID NP_055062.1

Catalog No. A301-966A GeneID 9693

Lot No. A301-966A-3



APPLICATIONS	WB, IHC
SPECIES REACTIVITY	Human, Mouse
PRESUMED REACTIVITY	Based on 100% sequence identity, this antibody is predicted to react with Dog
ISOTYPE	IgG
AMOUNT	100 µl at 1 mg/ml
STORAGE/SHELF LIFE	2 - 8° C / 1 year from date of receipt
PHYSICAL STATE	Liquid
BUFFER	Tris-citrate/phosphate buffer, pH 7 to 8 containing 0.09% Sodium Azide
ORIGIN	USA
PRODUCTION PROCEDURES	Antibody was affinity purified using an epitope specific to PDZ-GEF1 immobilized on solid support. The epitope recognized by A301-966A maps to a region between residue 975 and 1025 of human PDZ domain containing guanine nucleotide exchange factor (GEF) 1 using the numbering given in entry NP_055062.1 (GeneID 9693). Immunoglobulin concentration was determined by extinction coefficient: absorbance at 280 nm of 1.4 equals 1.0 mg of IgG.
APPLICATIONS	Centrifuge tube to remove product from lid. Optimal working dilutions should be determined experimentally by the investigator. Prepare working dilution immediately before use. Western Blot 1:2,000 - 1:10,000 Immunoprecipitation Not recommended Immunohistochemistry 1:500 - 1:2,000. Epitope retrieval with citrate buffer pH 6.0 or Tris-EDTA pH 9.0 is recommended for FFPE tissue sections.
APPLICATION NOTES	Western blot of lysates performed using standard western blot reagents and 4-8% SDS-PAGE.
IHC HUMAN CONTROLS	Lung Adenocarcinoma, Ovarian Carcinoma
ADDITIONAL INFO	http://www.bethyl.com/product/A301-966A Use the link above to view SDS, a current list of citations, and other product specific information.



Detection of human and mouse PDZ-GEF1 by western blot. *Samples:* Whole cell lysate (50 µg) from HeLa, 293T, Jurkat, mouse TCMK-1, and mouse NIH3T3 cells. *Antibodies:* Affinity purified rabbit anti-PDZ-GEF1 antibody A301-966A (lot A301-966A-3) used for WB at 0.1 µg/ml. *Detection:* Chemiluminescence with an exposure time of 3 minutes.

Detection of human PDZ-GEF1 by immunohistochemistry. *Sample:* FFPE section of human ovarian carcinoma. *Antibody:* Affinity purified rabbit anti- PDZ-GEF1 (Cat. No. A301-966A Lot3) used at a dilution of 1:1,000 (1 µg/ml). *Detection:* DAB