

Itch Antibody

Rabbit Polyclonal

Antigen Affinity Purified

Protein ID AAH11571.1

Catalog No. A301-992A-M

GeneID 83737

Lot No. A301-992A-M-1



APPLICATIONS	WB
SPECIES REACTIVITY	Human
PRESUMED REACTIVITY	Based on 100% sequence identity, this antibody is predicted to react with Mouse
AMOUNT	100 µl (10 blots)
CONCENTRATION	40 µg/ml
STORAGE/SHELF LIFE	2 - 8° C / 1 year from date of receipt
PHYSICAL STATE	Liquid
BUFFER	Tris-buffered Saline containing 0.1% BSA and 0.09% Sodium Azide
ISOTYPE	IgG
ORIGIN	USA
PRODUCTION PROCEDURES	Antibody was affinity purified using an epitope specific to Itch immobilized on solid support.

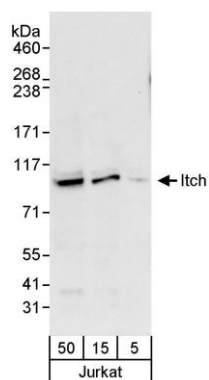
The epitope recognized by A301-992A-M maps to a region between residue 650 to 700 of human itchy homolog E3 ubiquitin protein ligase using the numbering given in entry AAH11571.1 (GeneID 83737).

APPLICATIONS	Centrifuge tube to remove product from lid. Optimal working dilutions should be determined experimentally by the investigator. Prepare working dilution immediately before use.
	Western Blot 1:1000
	Immunoprecipitation Not recommended

APPLICATION NOTES Western blot of lysates performed using standard western blot reagents and 4-8% SDS-PAGE.

ADDITIONAL INFO <https://www.bethyl.com/product/A301-992A-M>
Use the link above to view SDS, a current list of citations, and other product specific information.

This document certifies that this product has met all of the quality control standards defined by Bethyl Laboratories, Inc.
Eric McIntush, PhD | Chief Scientific Officer Date: June 21, 2019



Detection of human Itch by western blot. *Samples:* Whole cell lysate (5, 15, and 50 µg) from Jurkat cells. *Antibody:* Affinity purified rabbit anti-Itch antibody A301-992A-M used at 1:1000. *Detection:* Chemiluminescence with an exposure time of 10 seconds.