

ABCB9 Antibody

Rabbit Polyclonal

Antigen Affinity Purified Protein ID NP_062571.1
Catalog No. A301-997A-M GeneID 23457
Lot No. A301-997A-M-1



APPLICATIONS WB, IP, IHC
SPECIES REACTIVITY Human, Mouse
PRESUMED REACTIVITY Based on 100% sequence identity, this antibody is predicted to react with Rat
AMOUNT 100 µl (10 blots)
CONCENTRATION 40 µg/ml
STORAGE/SHELF LIFE 2 - 8° C / 1 year from date of receipt
PHYSICAL STATE Liquid
BUFFER Tris-buffered Saline containing 0.1% BSA and 0.09% Sodium Azide
ISOTYPE IgG
ORIGIN USA
PRODUCTION PROCEDURES Antibody was affinity purified using an epitope specific to ABCB9 immobilized on solid support.

The epitope recognized by A301-997A-M maps to a region between residue 475 and 525 of human ATP-binding cassette, sub-family B (MDR/TAP), member 9 using the numbering given in entry NP_062571.1 (GeneID 23457).

APPLICATIONS Centrifuge tube to remove product from lid. Optimal working dilutions should be determined experimentally by the investigator. Prepare working dilution immediately before use.

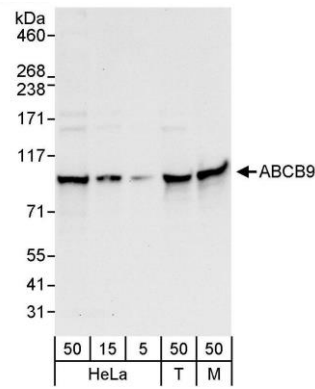
Western Blot 1:1000
Immunoprecipitation The antibody contained within A301-997A-M has been qualified for use in immunoprecipitation; however, we recommend using the alternative formulation of this antibody found as product A301-997A.
Immunohistochemistry 1:10 - 1:40. Epitope retrieval with citrate buffer pH 6.0 or Tris-EDTA pH 9.0 is recommended for FFPE tissue sections.

APPLICATION NOTES Western blot of immunoprecipitates performed using Normal Pig Serum (Cat. No. S100-020), Goat anti-Rabbit Light Chain HRP Conjugate (Cat. No. A120-113P) and 4-8% SDS-PAGE (link to IP-western blot protocol in Additional Info section below).

Western blot of lysates performed using standard western blot reagents and 4-8% SDS-PAGE.

ADDITIONAL INFO <https://www.bethyl.com/product/A301-997A-M>
Use the link above to view SDS, a current list of citations, and other product specific information.
IP-western blot protocol: https://www.bethyl.com/content/protocol_IP_WB

This document certifies that this product has met all of the quality control standards defined by Bethyl Laboratories, Inc.
Eric McIntush, PhD | Chief Scientific Officer Date: June 21, 2019



Detection of human and mouse ABCB9 by western blot.
Samples: Whole cell lysate from HeLa (5, 15, and 50 µg), HEK293T (T; 50 µg) and mouse NIH 3T3 (M; 50 µg) cells.
Antibody: Affinity purified rabbit anti-ABCB9 antibody A301-997A-M used at 1:1000. *Detection:* Chemiluminescence with an exposure time of 10 seconds.