

# eIF3A/eIF3S10 Antibody

Rabbit Polyclonal

Antigen Affinity Purified

Protein ID NP\_003741.1

Catalog No. A302-002A-M

GeneID 8661

Lot No. A302-002A-M-1



<b>APPLICATIONS</b>	WB, IP
<b>SPECIES REACTIVITY</b>	Human, Mouse
<b>PRESUMED REACTIVITY</b>	Based on 100% sequence identity, this antibody is predicted to react with Rat, Zebrafish and X. tropicalis
<b>AMOUNT</b>	100 µl (10 blots)
<b>CONCENTRATION</b>	100 µg/ml
<b>STORAGE/SHELF LIFE</b>	2 - 8° C / 1 year from date of receipt
<b>PHYSICAL STATE</b>	Liquid
<b>BUFFER</b>	Tris-buffered Saline containing 0.1% BSA and 0.09% Sodium Azide
<b>ISOTYPE</b>	IgG
<b>ORIGIN</b>	USA
<b>PRODUCTION PROCEDURES</b>	Antibody was affinity purified using an epitope specific to eIF3A/eIF3S10 immobilized on solid support.

The epitope recognized by A302-002A-M maps to a region between residue 1 and 50 of human translation initiation factor 3 subunit A (eukaryotic translation initiation factor 3, subunit 10) using the numbering given in entry NP\_003741.1 (GeneID 8661).

**APPLICATIONS** Centrifuge tube to remove product from lid. Optimal working dilutions should be determined experimentally by the investigator. Prepare working dilution immediately before use.

Western Blot 1:1000

Immunoprecipitation The antibody contained within A302-002A-M has been qualified for use in immunoprecipitation; however, we recommend using the alternative formulation of this antibody found as product A302-002A.

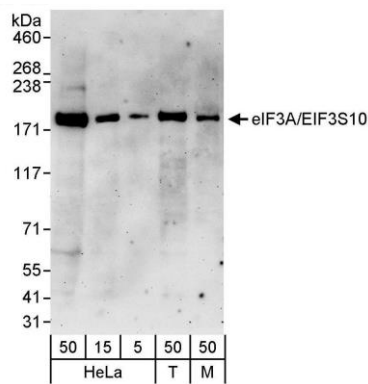
**APPLICATION NOTES** Western blot of immunoprecipitates performed using Normal Pig Serum (Cat. No. S100-020), Goat anti-Rabbit Light Chain HRP Conjugate (Cat. No. A120-113P) and 4-8% SDS-PAGE (link to IP-western blot protocol in Additional Info section below).

Western blot of lysates performed using standard western blot reagents and 4-8% SDS-PAGE.

**ADDITIONAL INFO** <https://www.bethyl.com/product/A302-002A-M>

Use the link above to view SDS, a current list of citations, and other product specific information. IP-western blot protocol [https://www.bethyl.com/content/protocol\\_IP\\_WB](https://www.bethyl.com/content/protocol_IP_WB)

This document certifies that this product has met all of the quality control standards defined by Bethyl Laboratories, Inc.  
Eric McIntush, PhD | Chief Scientific Officer Date: October 22, 2019



**Detection of human and mouse eIF3A/eIF3S10 by western blot.** *Samples:* Whole cell lysate from HeLa (5, 15, and 50 μg), HEK293T (T; 50 μg) and mouse NIH 3T3 (M; 50 μg) cells. *Antibody:* Affinity purified rabbit anti-eIF3A/eIF3S10 antibody A302-002A-M (lot A302-002A-M-1) used at 1:1000. *Detection:* Chemiluminescence with an exposure time of 3 minutes.