

eIF3A/eIF3S10 Antibody

Rabbit Polyclonal

Antigen Affinity Purified

Catalog No. A302-003A

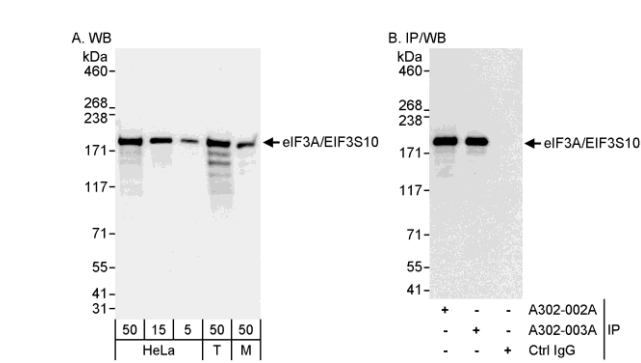
Lot No. A302-003A-1

Protein ID NP_003741.1

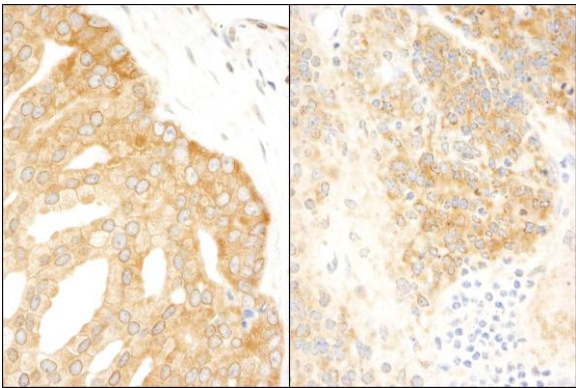
Gene ID 8661



APPLICATIONS	WB, IP, IHC-P, IF								
REACTIVITY TESTED	Human, Mouse								
PRESUMED REACTIVITY	Based on 100% sequence identity, this antibody is predicted to react with Rat, Rabbit, Guinea pig_10141, Orangutan, Rhesus Monkey, Gorilla, Chimpanzee, Root node of taxonomy, White-tufted-ear marmoset, Crab-eating macaque, Small-eared galago and Northern white-cheeked gibbon.								
ISOTYPE	IgG								
AMOUNT	0.1 ml at 0.2 mg/ml								
STORAGE/SHELF LIFE	2 - 8° C / 1 year from date of receipt								
PHYSICAL STATE	Liquid								
BUFFER	Tris-buffered Saline with 0.1% BSA containing 0.09% Sodium Azide								
ORIGIN	USA								
PRODUCTION PROCEDURES	<p>Antibody was affinity purified using an epitope specific to eIF3A/eIF3S10 immobilized on solid support.</p> <p>The epitope recognized by A302-003A maps to a region between residue 860 and 910 of human translation initiation factor 3 subunit A (eukaryotic translation initiation factor 3, subunit 10) using the numbering given in entry NP_003741.1 (GeneID 8661).</p> <p>Immunoglobulin concentration was determined by extinction coefficient: absorbance at 280 nm of 1.4 equals 1.0 mg of IgG.</p>								
APPLICATIONS	<p>Centrifuge tube to remove product from lid. Optimal working dilutions should be determined experimentally by the investigator. Prepare working dilution immediately before use.</p> <table><tr><td>Western Blot</td><td>1:2,000 to 1:10,000</td></tr><tr><td>Immunoprecipitation</td><td>2 to 5 µg/mg lysate</td></tr><tr><td>Immunohistochemistry</td><td>1:100 to 1:500. Epitope retrieval with citrate buffer pH6.0 or Tris-EDTA pH9.0 is recommended.</td></tr><tr><td>Immunofluorescence</td><td>1:50 to 1:500</td></tr></table>	Western Blot	1:2,000 to 1:10,000	Immunoprecipitation	2 to 5 µg/mg lysate	Immunohistochemistry	1:100 to 1:500. Epitope retrieval with citrate buffer pH6.0 or Tris-EDTA pH9.0 is recommended.	Immunofluorescence	1:50 to 1:500
Western Blot	1:2,000 to 1:10,000								
Immunoprecipitation	2 to 5 µg/mg lysate								
Immunohistochemistry	1:100 to 1:500. Epitope retrieval with citrate buffer pH6.0 or Tris-EDTA pH9.0 is recommended.								
Immunofluorescence	1:50 to 1:500								
APPLICATION NOTES	<p>Validation by IP/Western Blot was performed using a 4-8% SDS-PAGE gel and ReliaBLOT® Reagents (Cat. No. WB120).</p> <p>IHC validation was performed using Immunohistochemistry Accessory Kit (Cat. # IHC-101). Epitope Retrieval Buffer- High pH Concentrate (Cat. # IHC-101J) was substituted for Epitope Retrieval Buffer - Reduced pH Concentrate.</p>								
IHC HUMAN CONTROLS	Breast Carcinoma, Colon Carcinoma, Prostate Carcinoma								
IHC MOUSE CONTROLS	Teratoma								
ADDITIONAL INFO	<p>http://www.bethyl.com/product/A302-003A</p> <p>Use the link above to view SDS, a current list of citations, and other product specific information.</p>								



Detection of Human and Mouse eIF3A/eIF3S10 by Western Blot (h&m) and Immunoprecipitation (h). *Samples:* Whole cell lysate from HeLa (5, 15 and 50 µg for WB; 1 mg for IP, 20% of IP loaded), 293T (T; 50 µg) and mouse NIH3T3 (M; 50µg) cells. *Antibodies:* Affinity purified rabbit anti-eIF3A/eIF3S10 antibody A302-003A used for WB at 0.04 µg/ml (A) and 1 µg/ml (B) and used for IP at 3 µg/mg lysate. eIF3A/eIF3S10 was also immunoprecipitated by rabbit anti- eIF3A/eIF3S10 antibody A302-002A, which recognizes an upstream epitope. *Detection:* Chemiluminescence with exposure times of 3 seconds (A and B).



Detection of Human and Mouse eIF3A/eIF3S10 by Immunohistochemistry. *Sample:* FFPE section of human prostate carcinoma (left) and mouse teratoma (right). *Antibody:* Affinity purified rabbit anti-eIF3A/eIF3S10 (Cat. No. A302-003A) used at a dilution of 1:200 (1µg/ml). *Detection:* DAB