

KSRP Antibody

Rabbit Polyclonal

Antigen Affinity Purified Protein ID Q92945.3

Catalog No. A302-021A-M GeneID 8570

Lot No. A302-021A-M-2



APPLICATIONS	WB, IP, IHC
SPECIES REACTIVITY	Human, Mouse
AMOUNT	100 µl (10 blots)
CONCENTRATION	100 µg/ml
STORAGE/SHELF LIFE	2 - 8° C / 1 year from date of receipt
PHYSICAL STATE	Liquid
BUFFER	Tris-buffered Saline containing 0.1% BSA and 0.09% Sodium Azide
ISOTYPE	IgG
ORIGIN	USA
PRODUCTION PROCEDURES	Antibody was affinity purified using an epitope specific to KSRP immobilized on solid support.

The epitope recognized by A302-021A-M maps to a region between residue 100 and 150 of human KH-type splicing regulatory protein using the numbering given in entry Q92945.3 (GeneID 8570).

APPLICATIONS Centrifuge tube to remove product from lid. Optimal working dilutions should be determined experimentally by the investigator. Prepare working dilution immediately before use.

Western Blot 1:1000

Immunoprecipitation The antibody contained within A302-021A-M has been qualified for use in immunoprecipitation; however, we recommend using the alternative formulation of this antibody found as product A302-021A.

Immunohistochemistry 1:100 - 1:500. Epitope retrieval with citrate buffer pH 6.0 or Tris-EDTA pH 9.0 is recommended for FFPE tissue sections.

APPLICATION NOTES Western blot of immunoprecipitates performed using Normal Pig Serum (Cat. No. S100-020), Goat anti-Rabbit Light Chain HRP Conjugate (Cat. No. A120-113P) and 4-8% SDS-PAGE (link to IP-western blot protocol in Additional Info section below).

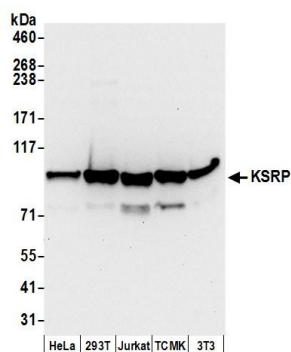
Western blot of lysates performed using standard western blot reagents and 4-8% SDS-PAGE.

ADDITIONAL INFO <https://www.bethyl.com/product/A302-021A-M>

Use the link above to view SDS, a current list of citations, and other product specific information.

IP-western blot protocol: https://www.bethyl.com/content/protocol_IP_WB

This document certifies that this product has met all of the quality control standards defined by Bethyl Laboratories, Inc.
Eric McIntush, PhD | Chief Scientific Officer Date: June 21, 2019

**Detection of human and mouse KSRP by western blot.**

Samples: Whole cell lysate (50 µg) from HeLa, HEK293T, Jurkat, mouse TCMK-1, and mouse NIH 3T3 cells prepared using NETN lysis buffer. *Antibodies:* Affinity purified rabbit anti-KSRP antibody A302-021A-M (lot A302-021A-M-2) used for WB at 1:1000. *Detection:* Chemiluminescence with an exposure time of 10 seconds.