

BAT3 Antibody

Rabbit Polyclonal

Antigen Affinity Purified

Protein ID NP_004630.3

Catalog No. A302-038A-M

Gene ID 7917

Lot No. A302-038A-M-1



APPLICATIONS WB, IP

REACTIVITY TESTED Human

PRESUMED REACTIVITY Based on 100% sequence identity, this antibody is predicted to react with Mouse, Rat, Horse, Rhesus Monkey, Gorilla, Crab-eating macaque, Chinese hamster and Northern white-cheeked gibbon.

ISOTYPE IgG

AMOUNT 100 µl (10 blots)

STORAGE/SHELF LIFE 2 - 8° C / 1 year from date of receipt

PHYSICAL STATE Liquid

BUFFER Tris-buffered Saline with 0.1% BSA containing 0.09% Sodium Azide

ORIGIN USA

PRODUCTION PROCEDURES Antibody was affinity purified using an epitope specific to BAT3 immobilized on solid support.

The epitope recognized by A302-038A-M maps to a region between residue 200 and 250 of human HLA-B associated transcript 3 using the numbering given in entry NP_004630.3 (GeneID 7917).

APPLICATIONS Centrifuge tube to remove product from lid. Optimal working dilutions should be determined experimentally by the investigator. Prepare working dilution immediately before use.

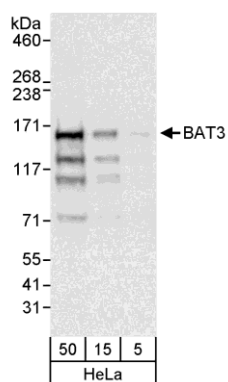
Western Blot 1:1000

Immunoprecipitation The antibody contained within A302-038A-M has been qualified for use in immunoprecipitation; however, we recommend using the alternative formulation of this antibody found as product A302-038A.

ADDITIONAL INFO <http://www.bethyl.com/product/A302-038A-M>

Use the link above to view SDS, a current list of citations, and other product specific information.

BAT3 Antibody: A302-038A-M



Detection of Human BAT3 by Western Blot. *Samples:* Whole cell lysate (5, 15, and 50 µg) from HeLa cells. *Antibody:* Affinity purified rabbit anti-BAT3 antibody A302-038A-M used at 1:1000. *Detection:* Chemiluminescence with an exposure time of 3 seconds.