

BAT3 Antibody

Rabbit Polyclonal

Antigen Affinity Purified

Catalog No. A302-038A-T

Lot No. A302-038A-T-1

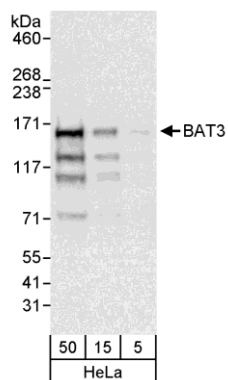
Protein ID NP_004630.3

Gene ID 7917



APPLICATIONS	WB, IP
REACTIVITY TESTED	Human
PRESUMED REACTIVITY	Based on 100% sequence identity, this antibody is predicted to react with Mouse, Rat, Horse, Rhesus Monkey, Gorilla, Crab-eating macaque, Chinese hamster and Northern white-cheeked gibbon.
ISOTYPE	IgG
AMOUNT	20 µl (2 blots)
STORAGE/SHELF LIFE	2 - 8° C / 1 year from date of receipt
PHYSICAL STATE	Liquid
BUFFER	Tris-buffered Saline with 0.1% BSA containing 0.09% Sodium Azide
ORIGIN	USA
PRODUCTION PROCEDURES	Antibody was affinity purified using an epitope specific to BAT3 immobilized on solid support. The epitope recognized by A302-038A-T maps to a region between residue 200 and 250 of human HLA-B associated transcript 3 using the numbering given in entry NP_004630.3 (GeneID 7917).
APPLICATIONS	Centrifuge tube to remove product from lid. Optimal working dilutions should be determined experimentally by the investigator. Prepare working dilution immediately before use. Western Blot 1:1000 Immunoprecipitation The antibody contained within A302-038A-T has been qualified for use in immunoprecipitation; however, we recommend using the alternative formulation of this antibody found as product A302-038A.
APPLICATION NOTES	Validation by IP/Western Blot was performed using a 4-8% SDS-PAGE gel and ReliaBLOT® Reagents (Cat. No. WB120).
ADDITIONAL INFO	http://www.bethyl.com/product/A302-038A-T Use the link above to view SDS, a current list of citations, and other product specific information.

BAT3 Antibody: A302-038A-T



Detection of Human BAT3 by Western Blot. *Samples:* Whole cell lysate (5, 15, and 50 µg) from HeLa cells. *Antibody:* Affinity purified rabbit anti-BAT3 antibody A302-038A-T used at 1:1000. *Detection:* Chemiluminescence with an exposure time of 3 seconds.