

# GSK3-beta Antibody

Rabbit Polyclonal

Antigen Affinity Purified

Protein ID AAA66475.1

Catalog No. A302-049A

GeneID 2932

Lot No. A302-049A-1



<b>APPLICATIONS</b>	WB, IP
<b>SPECIES REACTIVITY</b>	Human, Mouse
<b>PRESUMED REACTIVITY</b>	Based on 100% sequence identity, this antibody is predicted to react with Rat and X. laevis
<b>AMOUNT</b>	100 µl
<b>CONCENTRATION</b>	1000 µg/ml
<b>STORAGE/SHELF LIFE</b>	2 - 8° C / 1 year from date of receipt
<b>PHYSICAL STATE</b>	Liquid
<b>BUFFER</b>	Tris-citrate/phosphate buffer, pH 7 to 8 containing 0.09% Sodium Azide
<b>ISOTYPE</b>	IgG
<b>ORIGIN</b>	USA
<b>PRODUCTION PROCEDURES</b>	Antibody was affinity purified using an epitope specific to GSK3-beta immobilized on solid support.

The epitope recognized by A302-049A maps to a region between residue 1 and 50 of human glycogen synthase kinase-3 beta using the numbering given in entry AAA66475.1 (GeneID 2932).

Immunoglobulin concentration was determined by extinction coefficient: absorbance at 280 nm of 1.4 equals 1.0 mg of IgG.

**APPLICATIONS** Centrifuge tube to remove product from lid. Optimal working dilutions should be determined experimentally by the investigator. Prepare working dilution immediately before use.

Western Blot 1:2,000 – 1:10,000

Immunoprecipitation 10 µg/mg lysate

**APPLICATION NOTES** Western blot of immunoprecipitates performed using Normal Pig Serum (Cat. No. S100-020), Goat anti-Rabbit Light Chain HRP Conjugate (Cat. No. A120-113P) and 4-20% SDS-PAGE (link to IP-western blot protocol in Additional Info section below).

Western blot of lysates performed using standard western blot reagents and 4-20% SDS-PAGE.

**ADDITIONAL INFO** <https://www.bethyl.com/product/A302-049A>

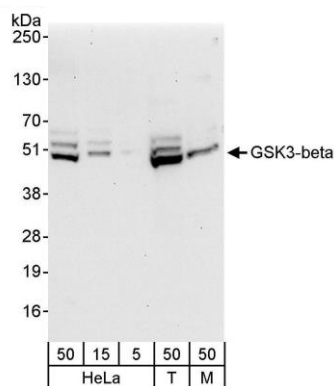
Use the link above to view SDS, a current list of citations, and other product specific information.

IP-western blot protocol [https://www.bethyl.com/content/protocol\\_IP\\_WB](https://www.bethyl.com/content/protocol_IP_WB)

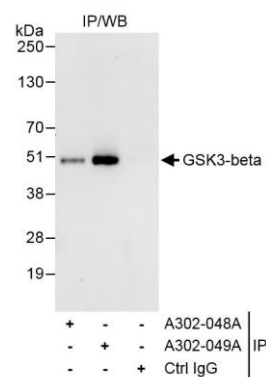
This document certifies that this product has met all of the quality control standards defined by Bethyl Laboratories, Inc.

Eric McIntush, PhD | Chief Scientific Officer

Date: November 12, 2019



**Detection of human and mouse GSK3-beta by western blot.** *Samples:* Whole cell lysate from HeLa (5, 15, and 50  $\mu$ g), HEK293T (T; 50  $\mu$ g) and mouse NIH 3T3 (M; 50  $\mu$ g) cells. *Antibody:* Affinity purified rabbit anti-GSK3-beta antibody A302-049A (lot A302-049A-1) used at 0.1  $\mu$ g/ml. *Detection:* Chemiluminescence with an exposure time of 30 seconds.



**Detection of human GSK3-beta by western blot of immunoprecipitates.** *Samples:* Whole cell lysate (1 mg for IP, 20% of IP loaded) from HeLa cells. *Antibodies:* Affinity purified rabbit anti-GSK3-beta antibody A302-049A (lot A302-049A-1) used for IP at 10  $\mu$ g/mg lysate. GSK3-beta was also immunoprecipitated by rabbit anti-GSK3-beta antibody A302-048A, which recognizes an upstream epitope. For blotting immunoprecipitated GSK3-beta, A302-049A was used at 1.0  $\mu$ g/ml. *Detection:* Chemiluminescence with exposure time of 10 seconds.