

Phospho RelA (S536) Antibody

Rabbit Polyclonal

Antigen Affinity Purified Protein ID NP_068810.2

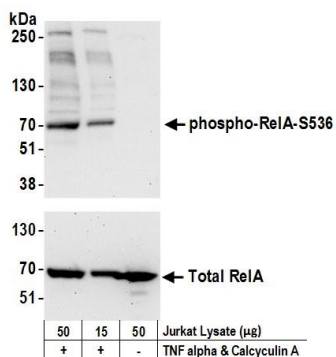
Catalog No. A302-062A-M GeneID 5970

Lot No. A302-062A-M-11



APPLICATIONS	WB, IHC						
SPECIES REACTIVITY	Human						
PRESUMED REACTIVITY	Based on 100% sequence identity, this antibody is predicted to react with Mouse						
AMOUNT	100 µl (10 blots)						
CONCENTRATION	100 µg/ml						
STORAGE/SHELF LIFE	2 - 8° C / 1 year from date of receipt						
PHYSICAL STATE	Liquid						
BUFFER	Tris-buffered Saline containing 0.1% BSA and 0.09% Sodium Azide						
ISOTYPE	IgG						
ORIGIN	USA						
PRODUCTION PROCEDURES	<p>Antibody was affinity purified using an epitope specific to Phospho RelA (S536) immobilized on solid support.</p> <p>The epitope recognized by A302-062A-M maps to a region of human v-rel reticuloendotheliosis viral oncogene homolog A surrounding serine 536 when serine 536 is phosphorylated using the numbering given in entry NP_068810.2 (GeneID 5970).</p>						
APPLICATIONS	<p>Centrifuge tube to remove product from lid. Optimal working dilutions should be determined experimentally by the investigator. Prepare working dilution immediately before use.</p> <table><tr><td>Western Blot</td><td>1:1000</td></tr><tr><td>Immunoprecipitation</td><td>Not recommended</td></tr><tr><td>Immunohistochemistry</td><td>1:100 - 1:500. Epitope retrieval with Tris-EDTA pH 9.0 is recommended for FFPE tissue sections.</td></tr></table>	Western Blot	1:1000	Immunoprecipitation	Not recommended	Immunohistochemistry	1:100 - 1:500. Epitope retrieval with Tris-EDTA pH 9.0 is recommended for FFPE tissue sections.
Western Blot	1:1000						
Immunoprecipitation	Not recommended						
Immunohistochemistry	1:100 - 1:500. Epitope retrieval with Tris-EDTA pH 9.0 is recommended for FFPE tissue sections.						
APPLICATION NOTES	Western blot of lysates performed using standard western blot reagents and 4-20% SDS-PAGE.						
ADDITIONAL INFO	<p>https://www.bethyl.com/product/A302-062A-M</p> <p>Use the link above to view SDS, a current list of citations, and other product specific information.</p>						

This document certifies that this product has met all of the quality control standards defined by Bethyl Laboratories, Inc.
Eric McIntush, PhD | Chief Scientific Officer Date: June 21, 2019



Detection of human phospho RelA-S536 by western blot.
Samples: Whole cell lysate (15 and 50 µg) from Jurkat cells treated with TNF alpha and Calyculin A (+) or mock treated (-). *Antibodies:* Affinity purified rabbit anti-Phospho RelA (S536) antibody A302-062A-M (lot A302-062A-M-11) used for WB at 1:1000. *Detection:* Chemiluminescence with an exposure time of 30 seconds. Lower panel: Western blot for total RelA using affinity purified rabbit anti-RelA antibody A301-824A at 0.1 µg/ml with exposure time of 75 seconds.