

Phospho RelA (S536) Antibody

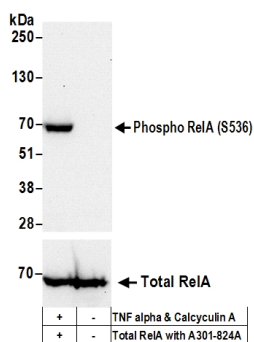
Rabbit Polyclonal

Antigen Affinity Purified Protein ID NP_068810.2
Catalog No. A302-062A-T Gene ID 5970
Lot No. A302-062A-T-9



APPLICATIONS	WB, IHC-P, IF
REACTIVITY TESTED	Human
PRESUMED REACTIVITY	Based on 100% sequence identity, this antibody is predicted to react with Mouse, Rat, Dog, Guinea pig_10141, Pig, Panda, Orangutan, Rhesus Monkey, Gorilla, Chimpanzee, Primates, White-tufted-ear marmoset, Crab-eating macaque, Pig-tailed macaque, Pygmy chimpanzee, Bornean orangutan and Bushpig.
ISOTYPE	IgG
AMOUNT	20 µl (2 blots)
STORAGE/SHELF LIFE	2 - 8° C / 1 year from date of receipt
PHYSICAL STATE	Liquid
BUFFER	Tris-buffered Saline containing 0.1% BSA and 0.09% Sodium Azide
ORIGIN	USA
PRODUCTION PROCEDURES	Antibody was affinity purified using an epitope specific to Phospho RelA (S536) immobilized on solid support. The epitope recognized by A302-062A-T maps to a region of human v-rel reticuloendotheliosis viral oncogene homolog A surrounding serine 536 when serine 536 is phosphorylated using the numbering given in entry NP_068810.2 (GeneID 5970).
APPLICATIONS	Centrifuge tube to remove product from lid. Optimal working dilutions should be determined experimentally by the investigator. Prepare working dilution immediately before use. Western Blot 1:1000 Immunoprecipitation Not recommended. Immunohistochemistry 1:100 to 1:400. Epitope retrieval with Tris-EDTA pH9.0 is recommended for FFPE tissue sections. Immunofluorescence 1:50 to 1:200
APPLICATION NOTES	Validation by IP/Western Blot was performed using a 4-20% SDS-PAGE gel and ReliaBLOT® Reagents (Cat. No. WB120). IHC validation was performed using Immunohistochemistry Accessory Kit (Cat. # IHC-101). Epitope Retrieval Buffer- High pH Concentrate (Cat. # IHC-101J) was substituted for Epitope Retrieval Buffer - Reduced pH Concentrate.
ADDITIONAL INFO	http://www.bethyl.com/product/A302-062A-T Use the link above to view SDS, a current list of citations, and other product specific information.

Phospho RelA (S536) Antibody: A302-062A-T



Detection of Human phospho RelA-S536 by Western Blot.

Samples: Whole cell lysate (50 μ g) from Jurkat cells treated with TNF alpha and Calyculin A (+) or mock treated (-).
Antibodies: Affinity purified rabbit anti-Phospho RelA (S536) antibody A302-062A-T (lot A302-062A-T-9) used for WB at 1:1000. **Detection:** Chemiluminescence with an exposure time of 30 seconds. Lower panel: Western Blot for total RelA using affinity purified rabbit anti-RelA antibody A301-824A at 0.1 μ g/ml with an exposure time of 30 seconds.