

Phospho RelA (S529) Antibody

Rabbit Polyclonal

Antigen Affinity Purified

Protein ID NP_068810.2

Catalog No. A302-063A

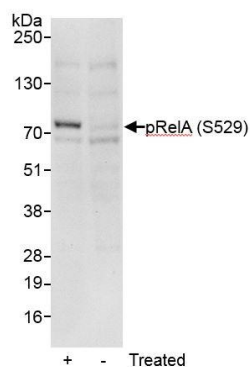
GeneID 5970

Lot No. A302-063A-1



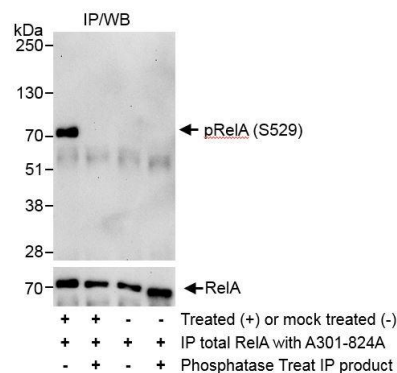
APPLICATIONS	WB
SPECIES REACTIVITY	Human
AMOUNT	100 µl
CONCENTRATION	1000 µg/ml
STORAGE/SHELF LIFE	2 – 8° C / 1 year from date of receipt
PHYSICAL STATE	Liquid
BUFFER	Tris-citrate/phosphate buffer, pH 7 to 8 containing 0.09% Sodium Azide
ISOTYPE	IgG
ORIGIN	USA
PRODUCTION PROCEDURES	Antibody was affinity purified using an epitope specific to Phospho RelA (S529) immobilized on solid support. The epitope recognized by A302-063A maps to a region of human v-rel reticuloendotheliosis viral oncogene homolog A surrounding serine 529 when serine 529 is phosphorylated using the numbering given in entry NP_068810.2 (GeneID 5970). Immunoglobulin concentration was determined by extinction coefficient: absorbance at 280 nm of 1.4 equals 1.0 mg of IgG.
APPLICATIONS	Centrifuge tube to remove product from lid. Optimal working dilutions should be determined experimentally by the investigator. Prepare working dilution immediately before use. Western Blot 1:2,000 – 1:10,000 Immunoprecipitation Not recommended
APPLICATION NOTES	Western blot of lysates performed using standard western blot reagents and 4–20% SDS-PAGE.
ADDITIONAL INFO	https://www.bethyl.com/product/A302-063A Use the link above to view SDS, a current list of citations, and other product specific information.

This document certifies that this product has met all of the quality control standards defined by Bethyl Laboratories, Inc.
Eric McIntush, PhD | Chief Scientific Officer Date: November 12, 2019



Detection of human Phospho RelA (S529) by western blot.

Samples: Whole cell lysate (50 µg) from Jurkat cells that were treated with TNF alpha and Calyculin A (+) or mock treated (-). *Antibody:* Affinity purified rabbit anti-Phospho RelA (S529) antibody A302-063A (lot A302-063A-1) used at 0.1 µg/ml. *Detection:* Chemiluminescence with an exposure time of 30 seconds.



Detection of human Phospho RelA (S529) by western blot of immunoprecipitates.

Samples: Whole cell lysate (1 mg for IP, 20% of IP loaded) from Jurkat cells that were treated with TNF alpha and Calyculin A (+) or mock treated (-). *Antibodies:* RelA was immunoprecipitated with affinity purified rabbit anti-RelA antibody A301-824A. Immunoprecipitated RelA was treated with phosphatase or mock treated. Affinity purified rabbit anti-Phospho RelA (S529) antibody A302-063A (lot A302-063A-1) used for WB at 1 µg/ml. *Detection:* Chemiluminescence with exposure time of 30 seconds.