

Phospho RelA (S529) Antibody

Rabbit Polyclonal

Antigen Affinity Purified Protein ID NP_068810.2

Catalog No. A302-063A-M GeneID 5970

Lot No. A302-063A-M-1



APPLICATIONS	WB
SPECIES REACTIVITY	Human
AMOUNT	100 µl (10 blots)
CONCENTRATION	100 µg/ml
STORAGE/SHELF LIFE	2 – 8° C / 1 year from date of receipt
PHYSICAL STATE	Liquid
BUFFER	Tris-buffered Saline containing 0.1% BSA and 0.09% Sodium Azide
ISOTYPE	IgG
ORIGIN	USA
PRODUCTION PROCEDURES	Antibody was affinity purified using an epitope specific to Phospho RelA (S529) immobilized on solid support.

The epitope recognized by A302-063A-M maps to a region of human v-rel reticuloendotheliosis viral oncogene homolog A surrounding serine 529 when serine 529 is phosphorylated using the numbering given in entry NP_068810.2 (GeneID 5970).

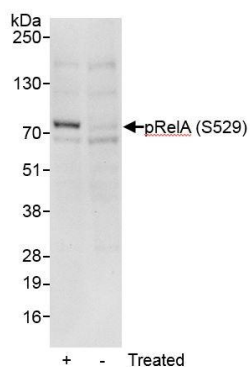
APPLICATIONS Centrifuge tube to remove product from lid. Optimal working dilutions should be determined experimentally by the investigator. Prepare working dilution immediately before use.

Western Blot	1:1000
Immunoprecipitation	Not recommended

APPLICATION NOTES Western blot of lysates performed using standard western blot reagents and 4–20% SDS-PAGE.

ADDITIONAL INFO <https://www.bethyl.com/product/A302-063A-M>
Use the link above to view SDS, a current list of citations, and other product specific information.

This document certifies that this product has met all of the quality control standards defined by Bethyl Laboratories, Inc.
Eric McIntush, PhD | Chief Scientific Officer Date: October 22, 2019

**Detection of human Phospho RelA (S529) by western blot.**

Samples: Whole cell lysate (50 μ g) from Jurkat cells that were treated with TNF alpha and Calyculin A (+) or mock treated (-). *Antibody:* Affinity purified rabbit anti-Phospho RelA (S529) antibody A302-063A-M (lot A302-063A-M-1) used at 1:1000. *Detection:* Chemiluminescence with an exposure time of 30 seconds.