

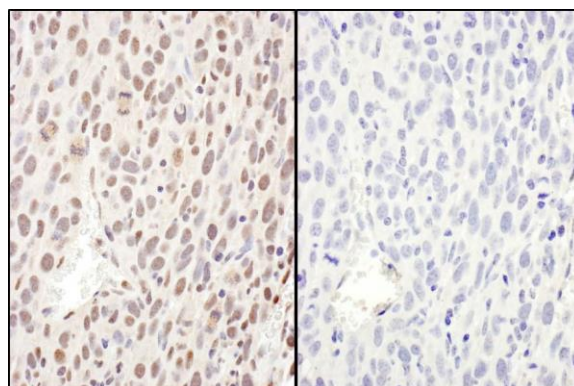
Detection of human Phospho RelA (S468) by western blot.

Samples: Whole cell lysate (50 µg) from Jurkat cells treated with TNF alpha and Calyculin A (+) or mock treated (-).

Antibodies: Affinity purified rabbit anti-Phospho RelA (S468) antibody A302-064A (lot A302-064A-3) used for WB at 0.1 µg/ml. *Detection:* Chemiluminescence with an exposure time of 10 seconds.

Detection of human Phospho RelA (S468) by immunohistochemistry.

Sample: FFPE section of human ovarian carcinoma. *Antibody:* Affinity purified rabbit anti-Phospho RelA (S468) (Cat. No. A302-064A Lot3) used at a dilution of 1:1,000 (1 µg/ml). *Detection:* DAB. *Counterstain:* IHC Hematoxylin (blue).



Detection of mouse Phospho RelA (S468) by immunohistochemistry.

Samples: FFPE sections of mouse renal cell carcinoma. Mock phosphatase treated section (left) and calf intestinal phosphatase-treated section (right). *Antibody:* Affinity purified rabbit anti- Phospho RelA (S468) (Cat. No. A302-064A Lot2) used at a dilution of 1:1,000 (1 µg/ml). *Detection:* DAB