

# CKI delta Antibody

Rabbit Polyclonal

Antigen Affinity Purified Protein ID NP\_620693.1

Catalog No. A302-136A-T GenelD 1453

Lot No. A302-136A-T-1

---

<b>APPLICATIONS</b>	WB, IP
<b>SPECIES REACTIVITY</b>	Human
<b>AMOUNT</b>	10 µl
<b>CONCENTRATION</b>	200 µg/ml
<b>STORAGE/SHELF LIFE</b>	2 – 8°C / 1 year from date of receipt
<b>PHYSICAL STATE</b>	Liquid
<b>BUFFER</b>	Tris-buffered Saline containing 0.1% BSA and 0.09% Sodium Azide
<b>ISOTYPE</b>	IgG
<b>ORIGIN</b>	USA
<b>PRODUCTION PROCEDURES</b>	Antibody was affinity purified using an epitope specific to CKI delta immobilized on solid support.

The epitope recognized by A302-136A-T maps to a region between residue 359 and 409 of human casein kinase 1, delta using the numbering given in entry NP\_620693.1 (GenelD 1453). This antibody may have slight crossreactivity with CKI epsilon, which has a similar epitope.

**APPLICATIONS** Centrifuge tube to remove product from lid. Optimal working dilutions should be determined experimentally by the investigator. Prepare working dilution immediately before use.

Western Blot 1:2,000 – 1:10,000

Immunoprecipitation 2 – 5 µg/mg lysate

**ADDITIONAL INFO** <https://www.bethyl.com/product/A302-136A-T>

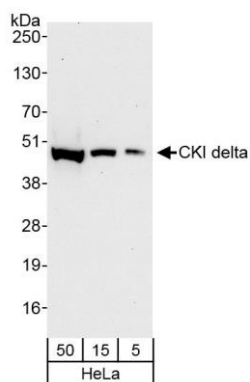
Use the link above to view SDS, a current list of citations, and other product specific information.

IP-western blot protocol: [https://www.bethyl.com/content/protocol\\_IP\\_WB](https://www.bethyl.com/content/protocol_IP_WB)

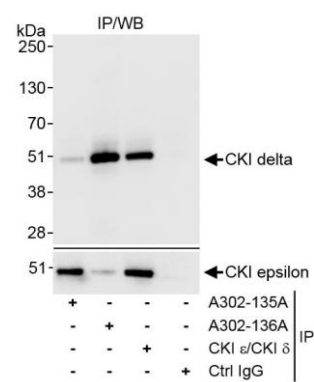
This document certifies that this product has met all of the quality control standards defined by Bethyl Laboratories, Inc.

Michael Spencer, PhD

Date: June 6, 2022



**Detection of human CKI delta by western blot.** *Samples:* Whole cell lysate (5, 15, and 50 µg) from HeLa cells. *Antibody:* Affinity purified rabbit anti-CKI delta antibody A302-136A (lot A302-136A-1) used at 0.04 µg/ml. *Detection:* Chemiluminescence with an exposure time of 30 seconds.



**Detection of human CKI delta by western blot of immunoprecipitates.** *Samples:* Whole cell lysate (1 mg for IP, 20% of IP loaded) from HeLa cells. *Antibodies:* Affinity purified rabbit anti-CKI delta antibody A302-136A (lot A302-136A-1) used for IP at 10 µg/mg lysate. CKI delta was also immunoprecipitated by a rabbit antibody (BL7891) directed to an epitope that is common to CKI epsilon and CKI delta. CKI epsilon was immunoprecipitated and blotted using A302-135A. For blotting immunoprecipitated CKI delta, A302-136A was used at 1.0 µg/ml. *Detection:* Chemiluminescence with exposure time of 3 seconds.