

# IP3R1 Antibody

Rabbit Polyclonal

Antigen Affinity Purified

Protein ID Q14643.2

Catalog No. A302-158A-M

GeneID 3708

Lot No. A302-158A-M-1



<b>APPLICATIONS</b>	WB, IP, IHC, IHC-IF
<b>SPECIES REACTIVITY</b>	Human, Mouse
<b>PRESUMED REACTIVITY</b>	Based on 100% sequence identity, this antibody is predicted to react with Rat
<b>AMOUNT</b>	100 µl (10 blots)
<b>CONCENTRATION</b>	40 µg/ml
<b>STORAGE/SHELF LIFE</b>	2 – 8° C / 1 year from date of receipt
<b>PHYSICAL STATE</b>	Liquid
<b>BUFFER</b>	Tris-buffered Saline containing 0.1% BSA and 0.09% Sodium Azide
<b>ISOTYPE</b>	IgG
<b>ORIGIN</b>	USA
<b>PRODUCTION PROCEDURES</b>	Antibody was affinity purified using an epitope specific to IP3R1 immobilized on solid support.

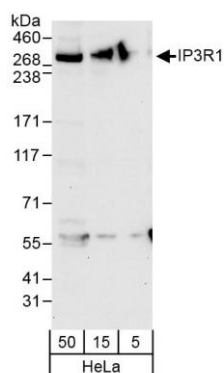
The epitope recognized by A302-158A-M maps to a region between residue 2708 and 2758 of human inositol 1,4,5-trisphosphate receptor type 1 using the numbering given in entry Q14643.2 (GeneID 3708).

<b>APPLICATIONS</b>	Centrifuge tube to remove product from lid. Optimal working dilutions should be determined experimentally by the investigator. Prepare working dilution immediately before use.
Western Blot	1:1000
Immunoprecipitation	The antibody contained within A302-158A-M has been qualified for use in immunoprecipitation; however, we recommend using the alternative formulation of this antibody found as product A302-158A.
Immunohistochemistry	1:20 – 1:100. Epitope retrieval with Tris-EDTA pH 9.0 is recommended for FFPE tissue sections.
Immunofluorescence (IHC)	1:10 – 1:50

**APPLICATION NOTES** Western blot of immunoprecipitates performed using Normal Pig Serum (Cat. No. S100-020), Goat anti-Rabbit Light Chain HRP Conjugate (Cat. No. A120-113P) and 3-8% SDS-PAGE (link to IP-western blot protocol in Additional Info section below).

**ADDITIONAL INFO** Western blot of lysates performed using standard western blot reagents and 3-8% SDS-PAGE. <https://www.bethyl.com/product/A302-158A-M>  
Use the link above to view SDS, a current list of citations, and other product specific information. IP-western blot protocol [https://www.bethyl.com/content/protocol\\_IP\\_WB](https://www.bethyl.com/content/protocol_IP_WB)

This document certifies that this product has met all of the quality control standards defined by Bethyl Laboratories, Inc.  
Eric McIntush, PhD | Chief Scientific Officer Date: October 22, 2019

**Detection of human IP3R1 by western blot. *Samples:***

Whole cell lysate (5, 15, and 50 µg) from HeLa cells.

*Antibody:* Affinity purified rabbit anti-IP3R1 antibody

A302-158A-M (lot A302-158A-M-1) used at 1:1000.

*Detection:* Chemiluminescence with an exposure time of 30 seconds.