

IP3R1 Antibody

Rabbit Polyclonal

Antigen Affinity Purified Protein ID Q14643.2

Catalog No. A302-158A-T GeneID 3708

Lot No. A302-158A-T-1

APPLICATIONS	WB, IP, IHC, IHC-IF
SPECIES REACTIVITY	Human, Mouse
PRESUMED REACTIVITY	Based on 100% sequence identity, this antibody is predicted to react with Rat
AMOUNT	10 µl
CONCENTRATION	200 µg/ml
STORAGE/SHELF LIFE	2 - 8°C / 1 year from date of receipt
PHYSICAL STATE	Liquid
BUFFER	Tris-buffered Saline containing 0.1% BSA and 0.09% Sodium Azide
ISOTYPE	IgG
ORIGIN	USA
PRODUCTION PROCEDURES	Antibody was affinity purified using an epitope specific to IP3R1 immobilized on solid support.

The epitope recognized by A302-158A-T maps to a region between residue 2708 and 2758 of human inositol 1,4,5-trisphosphate receptor type 1 using the numbering given in entry Q14643.2 (GeneID 3708).

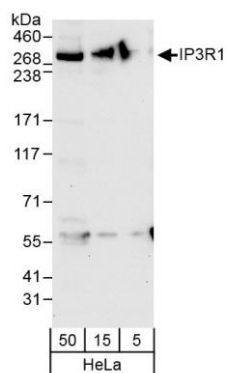
APPLICATIONS Centrifuge tube to remove product from lid. Optimal working dilutions should be determined experimentally by the investigator. Prepare working dilution immediately before use.

Western Blot	1:2,000 - 1:10,000
Immunoprecipitation	2 - 5 µg/mg lysate
Immunohistochemistry	1:100 - 1:500. Epitope retrieval with Tris-EDTA pH 9.0 is recommended for FFPE tissue sections.
Immunofluorescence (IHC)	1:50 - 1:250

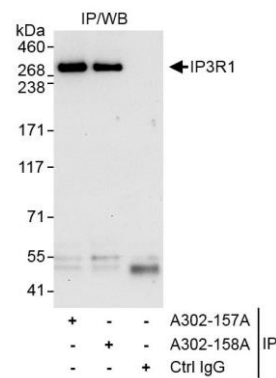
ADDITIONAL INFO <https://www.bethyl.com/product/A302-158A-T>

Use the link above to view SDS, a current list of citations, and other product specific information. IP-western blot protocol: https://www.bethyl.com/content/protocol_IP_WB

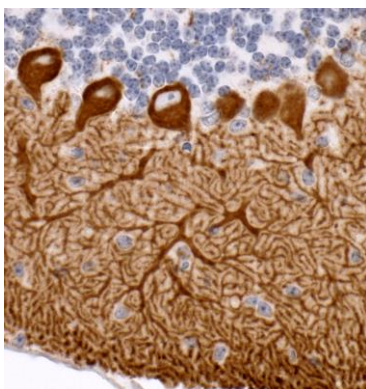
This document certifies that this product has met all of the quality control standards defined by Bethyl Laboratories, Inc.
Michael Spencer, PhD Date: June 6, 2022



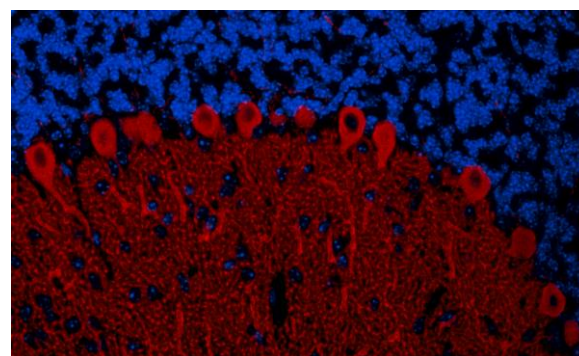
Detection of human IP3R1 by western blot. *Samples:* Whole cell lysate (5, 15, and 50 µg) from HeLa cells. *Antibody:* Affinity purified rabbit anti-IP3R1 antibody A302-158A (lot A302-158A-1) used at 0.04 µg/ml. *Detection:* Chemiluminescence with an exposure time of 30 seconds.



Detection of human IP3R1 by western blot of immunoprecipitates. *Samples:* Whole cell lysate (1 mg for IP, 20% of IP loaded) from HeLa cells. *Antibodies:* Affinity purified rabbit anti-IP3R1 antibody A302-158A (lot A302-158A-1) used for IP at 3 µg/mg lysate. IP3R1 was also immunoprecipitated by rabbit anti-IP3R1 antibody A302-157A, which recognizes an upstream epitope. For blotting immunoprecipitated IP3R1, A302-158A was used at 0.4 µg/ml. *Detection:* Chemiluminescence with exposure time of 30 seconds.



Detection of mouse IP3R1 by immunohistochemistry. *Sample:* FFPE section of mouse cerebellum. *Antibody:* Affinity purified rabbit anti-IP3R1 (Cat. No. A302-158A lot 1) used at a dilution of 1:200 (1 µg/ml). *Detection:* DAB. *Counterstain:* IHC Hematoxylin (blue).



Detection of mouse IP3R1 by immunohistochemistry. *Sample:* FFPE section of mouse cerebellum. *Antibody:* Affinity purified rabbit anti-IP3R1 (Cat. No. A302-158A lot 1) used at a dilution of 1:100 (2 µg/ml). *Detection:* Red-fluorescent goat anti-rabbit IgG-heavy and light chain cross-adsorbed Antibody DyLight® 594 Conjugated used at a dilution of 1:100. *Counterstain:* DAPI (blue).