

Axl Antibody

Rabbit Polyclonal

Antigen Affinity Purified

Protein ID NP_068713.2

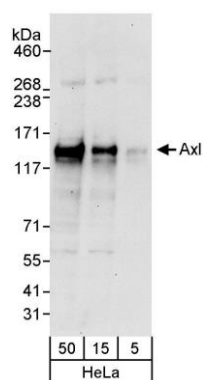
Catalog No. A302-167A-T

GeneID 558

Lot No. A302-167A-T-1

APPLICATIONS	WB
SPECIES REACTIVITY	Human
AMOUNT	10 µl
CONCENTRATION	1000 µg/ml
STORAGE/SHELF LIFE	2 – 8°C / 1 year from date of receipt
PHYSICAL STATE	Liquid
BUFFER	Tris-citrate/phosphate buffer, pH 7 to 8 containing 0.09% Sodium Azide
ISOTYPE	IgG
ORIGIN	USA
PRODUCTION PROCEDURES	Antibody was affinity purified using an epitope specific to Axl immobilized on solid support. The epitope recognized by A302-167A-T maps to a region between residue 250 and 300 of human AXL receptor tyrosine kinase using the numbering given in entry NP_068713.2 (GeneID 558).
APPLICATIONS	Centrifuge tube to remove product from lid. Optimal working dilutions should be determined experimentally by the investigator. Prepare working dilution immediately before use. Western Blot 1:2,000 – 1:10,000 Immunoprecipitation Not recommended. Use rabbit anti-Axl antibody A302-168A.
ADDITIONAL INFO	https://www.bethyl.com/product/A302-167A-T Use the link above to view SDS, a current list of citations, and other product specific information.

This document certifies that this product has met all of the quality control standards defined by Bethyl Laboratories, Inc.
Michael Spencer, PhD Date: June 6, 2022



Detection of human Axl by western blot. *Samples:* Whole cell lysate (5, 15 and 50 µg) from HeLa cells. *Antibodies:* Affinity purified rabbit anti-Axl antibody A302-167A used for WB at 0.1 µg/ml. *Detection:* Chemiluminescence with an exposure time of 30 seconds.