

MARK3 Antibody

Rabbit Polyclonal

Antigen Affinity Purified Protein ID EAW81819.1

Catalog No. A302-186A-T GenelD 4140

Lot No. A302-186A-T-1

APPLICATIONS WB, IP

SPECIES REACTIVITY Human

AMOUNT 10 µl

CONCENTRATION 200 µg/ml

STORAGE/SHELF LIFE 2 – 8°C / 1 year from date of receipt

PHYSICAL STATE Liquid

BUFFER Tris-buffered Saline containing 0.1% BSA and 0.09% Sodium Azide

ISOTYPE IgG

ORIGIN USA

PRODUCTION PROCEDURES Antibody was affinity purified using an epitope specific to MARK3 immobilized on solid support.

The epitope recognized by A302-186A-T maps to a region between residue 525 and 575 of human MAP/microtubule affinity-regulating kinase 3 using the numbering given in entry EAW81819.1 (GeneID 4140).

APPLICATIONS Centrifuge tube to remove product from lid. Optimal working dilutions should be determined experimentally by the investigator. Prepare working dilution immediately before use.

Western Blot 1:2,000 – 1:10,000

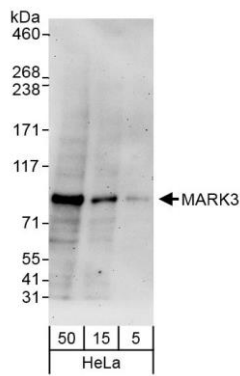
Immunoprecipitation 2 – 5 µg/mg lysate

ADDITIONAL INFO <https://www.bethyl.com/product/A302-186A-T>

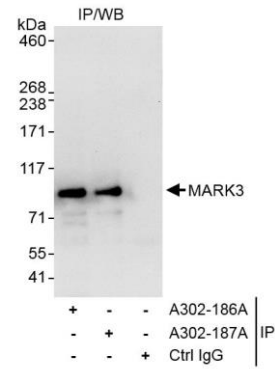
Use the link above to view SDS, a current list of citations, and other product specific information.

IP-western blot protocol: https://www.bethyl.com/content/protocol_IP_WB

This document certifies that this product has met all of the quality control standards defined by Bethyl Laboratories, Inc.
Michael Spencer, PhD Date: June 6, 2022



Detection of human MARK3 by western blot. *Samples:* Whole cell lysate (5, 15, and 50 µg) from HeLa cells. *Antibody:* Affinity purified rabbit anti-MARK3 antibody A302-186A (lot A302-186A-1) used at 0.04 µg/ml. *Detection:* Chemiluminescence with an exposure time of 3 minutes.



Detection of human MARK3 by western blot of immunoprecipitates. *Samples:* Whole cell lysate (1 mg for IP, 20% of IP loaded) from HeLa cells. *Antibodies:* Affinity purified rabbit anti-MARK3 antibody A302-186A (lot A302-186A-1) used for IP at 3 µg/mg lysate. MARK3 was also immunoprecipitated by rabbit anti-MARK3 antibody A302-187A, which recognizes a downstream epitope. For blotting immunoprecipitated MARK3, A302-186A was used at 1.0 µg/ml. *Detection:* Chemiluminescence with exposure time of 10 seconds.