

MASTL Antibody

Rabbit Polyclonal

Antigen Affinity Purified

Protein ID NP_116233.2

Catalog No. A302-190A-T

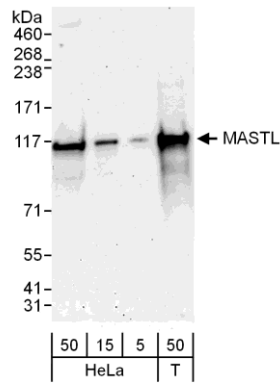
Gene ID 84930

Lot No. A302-190A-T-2



APPLICATIONS	WB, IP, IHC-P, IF
REACTIVITY TESTED	Human
ISOTYPE	IgG
AMOUNT	20 µl (2 blots)
STORAGE/SHELF LIFE	2 - 8° C / 1 year from date of receipt
PHYSICAL STATE	Liquid
BUFFER	Tris-buffered Saline with 0.1% BSA containing 0.09% Sodium Azide
ORIGIN	USA
PRODUCTION PROCEDURES	Antibody was affinity purified using an epitope specific to MASTL immobilized on solid support. The epitope recognized by A302-190A-T maps to a region between residue 550 and 600 of human microtubule associated serine/threonine kinase-like using the numbering given in entry NP_116233.2 (GeneID 84930).
APPLICATIONS	Centrifuge tube to remove product from lid. Optimal working dilutions should be determined experimentally by the investigator. Prepare working dilution immediately before use. Western Blot 1:1000 Immunoprecipitation The antibody contained within A302-190A-T has been qualified for use in immunoprecipitation; however, we recommend using the alternative formulation of this antibody found as product A302-190A. Immunohistochemistry The antibody contained within A302-190A-T has been qualified for use in immunohistochemistry; however, we recommend using the alternative formulation of this antibody found as product A302-190A. Immunofluorescence The antibody contained within A302-190A-T has been qualified for use in immunofluorescence; however, we recommend using the alternative formulation of this antibody found as product A302-190A.
APPLICATION NOTES	Validation by IP/Western Blot was performed using a 4-8% SDS-PAGE gel and ReliaBLOT® Reagents (Cat. No. WB120). IHC validation was performed using Immunohistochemistry Accessory Kit (Cat. # IHC-101).
ADDITIONAL INFO	http://www.bethyl.com/product/A302-190A-T Use the link above to view SDS, a current list of citations, and other product specific information.

MASTL Antibody: A302-190A-T



Detection of Human MASTL by Western Blot. *Samples:* Whole cell lysate from HeLa (5, 15, and 50 μ g) and 293T (T; 50 μ g) cells. *Antibody:* Affinity purified rabbit anti-MASTL antibody A302-190A-T used at 1:1000. *Detection:* Chemiluminescence with an exposure time of 3 minutes.