

# AKT2 Antibody

Rabbit Polyclonal

Antigen Affinity Purified

Protein ID NP\_001617.1

Catalog No. A302-209A

GeneID 208

Lot No. A302-209A-1



**APPLICATIONS** WB, IP

**SPECIES REACTIVITY** Human

**AMOUNT** 100  $\mu$ l

**CONCENTRATION** 200  $\mu$ g/ml

**STORAGE/SHELF LIFE** 2 – 8° C / 1 year from date of receipt

**PHYSICAL STATE** Liquid

**BUFFER** Tris-buffered Saline containing 0.1% BSA and 0.09% Sodium Azide

**ISOTYPE** IgG

**ORIGIN** USA

**PRODUCTION PROCEDURES** Antibody was affinity purified using an epitope specific to AKT2 immobilized on solid support.

The epitope recognized by A302-209A maps to a region between residue 431 and 481 of human v-akt murine thymoma viral oncogene homolog 2 using the numbering given in entry NP\_001617.1 (GeneID 208).

Immunoglobulin concentration was determined by extinction coefficient: absorbance at 280 nm of 1.4 equals 1.0 mg of IgG.

**APPLICATIONS** Centrifuge tube to remove product from lid. Optimal working dilutions should be determined experimentally by the investigator. Prepare working dilution immediately before use.

Western Blot 1:2,000 – 1:10,000

Immunoprecipitation 5 – 10  $\mu$ g/mg lysate

**APPLICATION NOTES** Western blot of immunoprecipitates performed using Normal Pig Serum (Cat. No. S100-020), Goat anti-Rabbit Light Chain HRP Conjugate (Cat. No. A120-113P) and 4-20% SDS-PAGE (link to IP-western blot protocol in Additional Info section below).

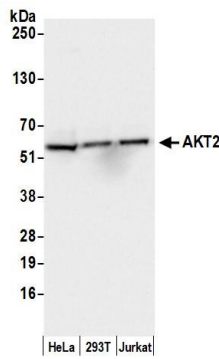
Western blot of lysates performed using standard western blot reagents and 4-20% SDS-PAGE.

**ADDITIONAL INFO** <https://www.bethyl.com/product/A302-209A>

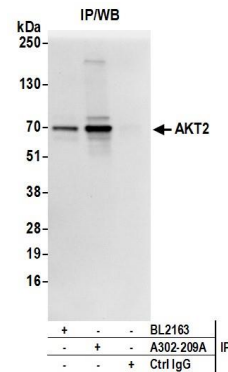
Use the link above to view SDS, a current list of citations, and other product specific information.

IP-western blot protocol: [https://www.bethyl.com/content/protocol\\_IP\\_WB](https://www.bethyl.com/content/protocol_IP_WB)

This document certifies that this product has met all of the quality control standards defined by Bethyl Laboratories, Inc.  
Eric McIntush, PhD | Chief Scientific Officer Date: June 21, 2019



**Detection of human AKT2 by western blot.** *Samples:* Whole cell lysate (15 µg) from HeLa, HEK293T, and Jurkat cells prepared using NETN lysis buffer. *Antibody:* Affinity purified rabbit anti-AKT2 antibody A302-209A (lot A302-209A-1) used for WB at 0.04 µg/ml. *Detection:* Chemiluminescence with an exposure time of 3 seconds.



**Detection of human AKT2 by western blot of immunoprecipitates.** *Samples:* Whole cell lysate (0.5 or 1.0 mg per IP reaction; 20% of IP loaded) from HeLa cells prepared using NETN lysis buffer. *Antibodies:* Affinity purified rabbit anti-AKT2 antibody A302-209A (lot A302-209A-1) used for IP at 6 µg per reaction. AKT2 was also immunoprecipitated by rabbit anti-AKT2 antibody BL2163. For blotting immunoprecipitated AKT2, A302-209A was used at 1 µg/ml. *Detection:* Chemiluminescence with an exposure time of 3 seconds.