

BAD Antibody

Rabbit Polyclonal

Antigen Affinity Purified

Protein ID NP_004313.1

Catalog No. A302-384A

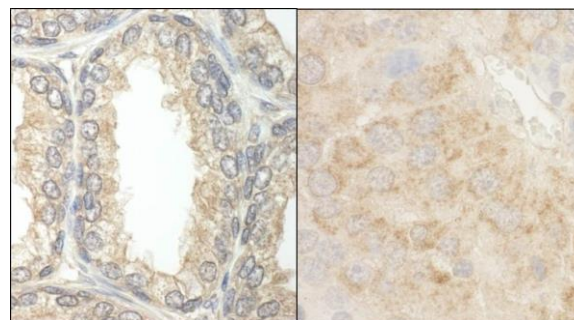
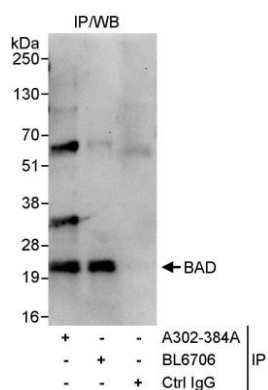
GeneID 572

Lot No. A302-384A-1



APPLICATIONS	IP, IHC
SPECIES REACTIVITY	Human, Mouse
PRESUMED REACTIVITY	Based on 100% sequence identity, this antibody is predicted to react with Rat
AMOUNT	100 µl
CONCENTRATION	1000 µg/ml
STORAGE/SHELF LIFE	2 - 8° C / 1 year from date of receipt
PHYSICAL STATE	Liquid
BUFFER	Tris-citrate/phosphate buffer, pH 7 to 8 containing 0.09% Sodium Azide
ISOTYPE	IgG
ORIGIN	USA
PRODUCTION PROCEDURES	<p>Antibody was affinity purified using an epitope specific to BAD immobilized on solid support.</p> <p>The epitope recognized by A302-384A maps to a region between residue 1 and 50 of human BCL2-antagonist of cell death using the numbering given in entry NP_004313.1 (GeneID 572).</p> <p>Antibody concentration was determined by extinction coefficient: absorbance at 280 nm of 1.4 equals 1.0 mg of IgG.</p>
APPLICATIONS	<p>Centrifuge tube to remove product from lid. Optimal working dilutions should be determined experimentally by the investigator. Prepare working dilution immediately before use.</p> <p>Western Blot Not recommended. A302-384A has not performed satisfactorily when used for WB of BAD in crude preparations (e.g. whole cell lysate). This antibody can be used for WB of enriched (e.g. immunoprecipitated) sources of BAD.</p> <p>Immunoprecipitation 5 - 10 µg/mg lysate</p> <p>Immunohistochemistry 1:1,000 - 1:5,000. Epitope retrieval with citrate buffer pH 6.0 is recommended for FFPE tissue sections.</p>
APPLICATION NOTES	Western blot of immunoprecipitates performed using Normal Pig Serum (Cat. No. S100-020), Goat anti-Rabbit Light Chain HRP Conjugate (Cat. No. A120-113P) and 4-12% SDS-PAGE (link to IP-western blot protocol in Additional Info section below).
IHC HUMAN CONTROLS	Ovarian Carcinoma, Prostate Carcinoma
IHC MOUSE CONTROLS	Renal Cell Carcinoma
ADDITIONAL INFO	<p>https://www.bethyl.com/product/A302-384A</p> <p>Use the link above to view SDS, a current list of citations, and other product specific information.</p> <p>IP-western blot protocol: https://www.bethyl.com/content/protocol_IP_WB</p>

This document certifies that this product has met all of the quality control standards defined by Bethyl Laboratories, Inc.
Eric McIntush, PhD | Chief Scientific Officer Date: June 21, 2019



Detection of human BAD by western blot of immunoprecipitates. *Samples:* Whole cell lysate (1 mg for IP, 20% of IP loaded) from HeLa cells. *Antibodies:* Affinity purified rabbit anti-BAD antibody A302-384A used for IP at 10 $\mu\text{g}/\text{mg}$ lysate. BAD was also immunoprecipitated by rabbit anti-BAD antibody BL6706, which recognizes a downstream epitope. For blotting immunoprecipitated BAD, A302-384A was used at 1 $\mu\text{g}/\text{ml}$. *Detection:* Chemiluminescence with an exposure time of 10 seconds.

Detection of human and mouse BAD by immunohistochemistry. *Sample:* FFPE section of human prostate carcinoma (left) and mouse renal cell carcinoma (right). *Antibody:* Affinity purified rabbit anti-BAD (Cat. No. A302-384A) used at a dilution of 1:5,000 (0.2 $\mu\text{g}/\text{ml}$) and 1:1,000 (1 $\mu\text{g}/\text{ml}$). *Detection:* DAB