

MED13L Antibody

Rabbit Polyclonal

Antigen Affinity Purified

Protein ID NP_056150.1

Catalog No. A302-420A-M

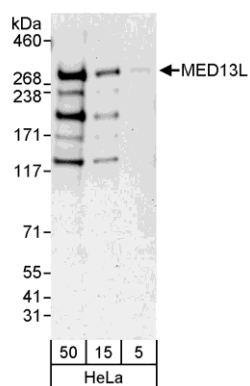
Gene ID 23389

Lot No. A302-420A-M-1



APPLICATIONS	WB, IP, IHC-P, IF
REACTIVITY TESTED	Human
PRESUMED REACTIVITY	Based on 100% sequence identity, this antibody is predicted to react with Rat, Dog, Horse, Rabbit, Guinea pig_10141, Panda, Orangutan, Rhesus Monkey, Chimpanzee, White-tufted-ear marmoset, Crab-eating macaque, European domestic ferret, African elephant, Naked mole rat and Northern white-cheeked gibbon.
ISOTYPE	IgG
AMOUNT	100 µl (10 blots)
STORAGE/SHELF LIFE	2 - 8° C / 1 year from date of receipt
PHYSICAL STATE	Liquid
BUFFER	Tris-buffered Saline with 0.1% BSA containing 0.09% Sodium Azide
ORIGIN	USA
PRODUCTION PROCEDURES	Antibody was affinity purified using an epitope specific to MED13L immobilized on solid support. The epitope recognized by A302-420A-M maps to a region between residue 550 and 600 of human mediator complex subunit 13-like using the numbering given in entry NP_056150.1 (GeneID 23389).
APPLICATIONS	Centrifuge tube to remove product from lid. Optimal working dilutions should be determined experimentally by the investigator. Prepare working dilution immediately before use. Western Blot 1:1000 Immunoprecipitation The antibody contained within A302-420A-M has been qualified for use in immunoprecipitation; however, we recommend using the alternative formulation of this antibody found as product A302-420A. Immunohistochemistry 1:50 to 1:200. Epitope retrieval with citrate buffer pH6.0 is recommended for FFPE tissue sections. Immunofluorescence 1:25 to 1:100
APPLICATION NOTES	Validation by IP/Western Blot was performed using a 4-8% SDS-PAGE gel and ReliaBLOT® Reagents (Cat. No. WB120).
ADDITIONAL INFO	http://www.bethyl.com/product/A302-420A-M Use the link above to view SDS, a current list of citations, and other product specific information.

MED13L Antibody: A302-420A-M



Detection of Human MED13L by Western Blot. *Samples:* Whole cell lysate (5, 15, and 50 µg) from HeLa cells. *Antibody:* Affinity purified rabbit anti-MED13L antibody A302-420A-M used at 1:1000. *Detection:* Chemiluminescence with an exposure time of 3 minutes.