

WDR5 Antibody

Rabbit Polyclonal

Antigen Affinity Purified Protein ID NP_060058.1

Catalog No. A302-429A-T GenelD 11091

Lot No. A302-429A-T-2

APPLICATIONS	IP, IHC
SPECIES REACTIVITY	Human
PRESUMED REACTIVITY	Based on 100% sequence identity, this antibody is predicted to react with Mouse, Rat and Bovine
AMOUNT	10 µl
CONCENTRATION	1000 µg/ml
STORAGE/SHELF LIFE	2 – 8°C / 1 year from date of receipt
PHYSICAL STATE	Liquid
BUFFER	Tris-citrate/phosphate buffer, pH 7 to 8 containing 0.09% Sodium Azide
ISOTYPE	IgG
ORIGIN	USA
PRODUCTION PROCEDURES	Antibody was affinity purified using an epitope specific to WDR5 immobilized on solid support.

The epitope recognized by A302-429A-T maps to a region between residue 1 and 50 of human WD repeat domain 5 using the numbering given in entry NP_060058.1 (GenelD 11091).

Immunoglobulin concentration was determined by extinction coefficient: absorbance at 280 nm of 1.4 equals 1.0 mg of IgG.

APPLICATIONS Centrifuge tube to remove product from lid. Optimal working dilutions should be determined experimentally by the investigator. Prepare working dilution immediately before use.

Western Blot Not recommended. Use rabbit anti-WDR5 antibody A302-430A.

Immunoprecipitation 2 – 10 µg/mg lysate

Immunohistochemistry 1:500 – 1:2,000. Epitope retrieval with Tris-EDTA pH 9.0 is recommended for FFPE tissue sections.

ADDITIONAL INFO <https://www.bethyl.com/product/A302-429A-T>

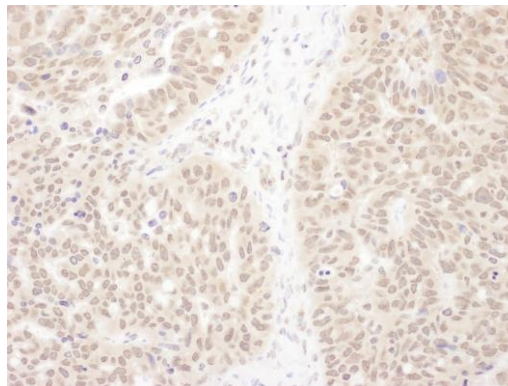
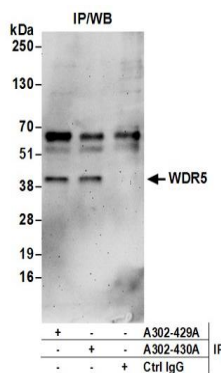
Use the link above to view SDS, a current list of citations, and other product specific information.

IP-western blot protocol: https://www.bethyl.com/content/protocol_IP_WB

This document certifies that this product has met all of the quality control standards defined by Bethyl Laboratories, Inc.

Michael Spencer, PhD

Date: June 6, 2022



Detection of human WDR5 by western blot of immunoprecipitates. *Samples:* Whole cell lysate (0.5 or 1.0 mg per IP reaction; 20% of IP loaded) from HeLa cells. *Antibodies:* Affinity purified rabbit anti-WDR5 antibody A302-429A (lot A302-429A-2) used for IP at 6 μ g per reaction. WDR5 was also immunoprecipitated by rabbit anti-WDR5 antibody A302-430A. For blotting immunoprecipitated WDR5, A302-430A was used at 1 μ g/ml. *Detection:* Chemiluminescence with an exposure time of 3 minutes.

Detection of human WDR5 by immunohistochemistry. *Sample:* FFPE section of human ovarian carcinoma. *Antibody:* Affinity purified rabbit anti-WDR5 (Cat. No. A302-429A Lot2) used at a dilution of 1:1,000 (1 μ g/ml). *Detection:* DAB