

PKC-delta Antibody

Rabbit Polyclonal

Antigen Affinity Purified

Catalog No. A302-448A

Lot No. A302-448A-1

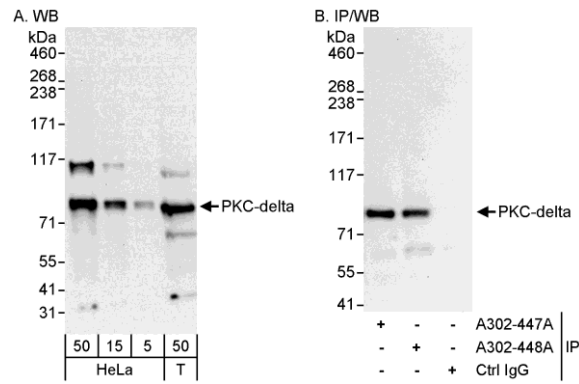
Protein ID NP_006245.2

Gene ID 5580



APPLICATIONS	WB, IP				
REACTIVITY TESTED	Human				
PRESUMED REACTIVITY	Based on 100% sequence identity, this antibody is predicted to react with Orangutan, Rhesus Monkey, Gorilla, Chimpanzee, White-tufted-ear marmoset, Crab-eating macaque and Northern white-cheeked gibbon.				
ISOTYPE	IgG				
AMOUNT	0.1 ml at 0.2 mg/ml				
STORAGE/SHELF LIFE	2 - 8° C / 1 year from date of receipt				
PHYSICAL STATE	Liquid				
BUFFER	Tris-buffered Saline with 0.1% BSA containing 0.09% Sodium Azide				
ORIGIN	USA				
PRODUCTION PROCEDURES	<p>Antibody was affinity purified using an epitope specific to PKC-delta immobilized on solid support.</p> <p>The epitope recognized by A302-448A maps to a region between residue 626 to 676 of human protein kinase C, delta using the numbering given in entry NP_006245.2 (GeneID 5580).</p> <p>Antibody concentration was determined by extinction coefficient: absorbance at 280 nm of 1.4 equals 1.0 mg of IgG.</p>				
APPLICATIONS	<p>Centrifuge tube to remove product from lid. Optimal working dilutions should be determined experimentally by the investigator. Prepare working dilution immediately before use.</p> <table><tr><td>Western Blot</td><td>1:2,000 to 1:10,000</td></tr><tr><td>Immunoprecipitation</td><td>2 to 5 µg/mg lysate</td></tr></table>	Western Blot	1:2,000 to 1:10,000	Immunoprecipitation	2 to 5 µg/mg lysate
Western Blot	1:2,000 to 1:10,000				
Immunoprecipitation	2 to 5 µg/mg lysate				
APPLICATION NOTES	Validation by IP/Western Blot was performed using a 4-8% SDS-PAGE gel and ReliaBLOT® Reagents (Cat. No. WB120).				
ADDITIONAL INFO	<p>http://www.bethyl.com/product/A302-448A</p> <p>Use the link above to view SDS, a current list of citations, and other product specific information.</p>				

PKC-delta Antibody: A302-448A



Detection of Human PKC-delta by Western Blot and Immunoprecipitation. *Samples:* Whole cell lysate from HeLa (5, 15 and 50 µg for WB; 1 mg for IP, 20% of IP loaded) and 293T (T; 50 µg) cells. *Antibodies:* Affinity purified rabbit anti-PKC-delta antibody A302-448A used for WB at 0.04 µg/ml (A) and 1 µg/ml (B) and used for IP at 3 µg/mg lysate. PKC-delta was also immunoprecipitated by rabbit anti-PKC-delta antibody A302-447A, which recognizes an upstream epitope. *Detection:* Chemiluminescence with exposure times of 10 seconds (A and B).