

# SPAK Antibody

Rabbit Polyclonal

Antigen Affinity Purified

Protein ID AAC72238.1

Catalog No. A302-465A-T

GeneID 27347

Lot No. A302-465A-T-1

---

|                              |  |
|------------------------------|--|
| <b>APPLICATIONS</b>          | WB, IHC  |
| <b>SPECIES REACTIVITY</b>    | Human  |
| <b>AMOUNT</b>                | 10 µl  |
| <b>CONCENTRATION</b>         | 200 µg/ml  |
| <b>STORAGE/SHELF LIFE</b>    | 2 – 8°C / 1 year from date of receipt  |
| <b>PHYSICAL STATE</b>        | Liquid   |
| <b>BUFFER</b>                | Tris-buffered Saline containing 0.1% BSA and 0.09% Sodium Azide                                |
| <b>ISOTYPE</b>               | IgG  |
| <b>ORIGIN</b>                | USA  |
| <b>PRODUCTION PROCEDURES</b> | Antibody was affinity purified using an epitope specific to SPAK immobilized on solid support. |

The epitope recognized by A302-465A-T maps to a region between residue 375 and 425 of human STE20/SPS1-related proline-alanine-rich protein kinase using the numbering given in entry AAC72238.1 (GeneID 27347).

**APPLICATIONS** Centrifuge tube to remove product from lid. Optimal working dilutions should be determined experimentally by the investigator. Prepare working dilution immediately before use.

Western Blot 1:2,000 – 1:10,000

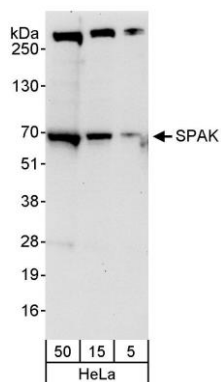
Immunoprecipitation Not recommended

Immunohistochemistry 1:100 – 1:500. Epitope retrieval with citrate buffer pH 6.0 is recommended for FFPE tissue sections.

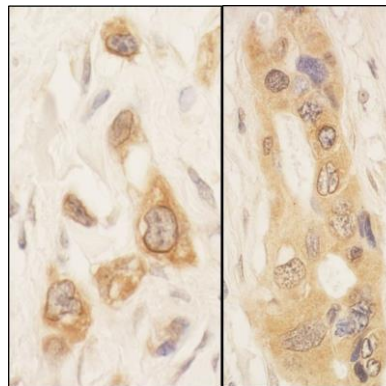
**ADDITIONAL INFO** <https://www.bethyl.com/product/A302-465A-T>

Use the link above to view SDS, a current list of citations, and other product specific information.

This document certifies that this product has met all of the quality control standards defined by Bethyl Laboratories, Inc.  
Michael Spencer, PhD Date: June 6, 2022



**Detection of human SPAK by western blot.** *Samples:* Whole cell lysate (5, 15 and 50 µg) from HeLa cells. *Antibodies:* Affinity purified rabbit anti-SPAK antibody A302-465A used for WB at 0.04 µg/ml. *Detection:* Chemiluminescence with an exposure time of 30 seconds.



**Detection of human SPAK by immunohistochemistry.** *Samples:* FFPE sections of human stomach cancer and ovarian carcinoma. *Antibody:* Affinity purified rabbit anti-SPAK (Cat. No. A302-465A Lot1) used at a dilution of 1:200 (1 µg/ml). *Detection:* DAB