

MBD3 Antibody

Rabbit Polyclonal

Antigen Affinity Purified

Protein ID NP_003917.1

Catalog No. A302-528A

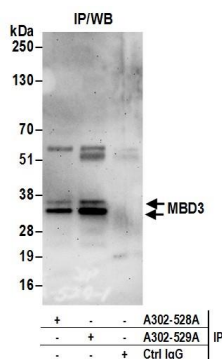
GeneID 53615

Lot No. A302-528A-2



APPLICATIONS	IP
SPECIES REACTIVITY	Human
PRESUMED REACTIVITY	Based on 100% sequence identity, this antibody is predicted to react with Mouse
AMOUNT	100 μ l
CONCENTRATION	1000 μ g/ml
STORAGE/SHELF LIFE	2 - 8 $^{\circ}$ C / 1 year from date of receipt
PHYSICAL STATE	Liquid
BUFFER	Tris-citrate/phosphate buffer, pH 7 to 8 containing 0.09% Sodium Azide
ISOTYPE	IgG
ORIGIN	USA
PRODUCTION PROCEDURES	Antibody was affinity purified using an epitope specific to MBD3 immobilized on solid support. The epitope recognized by A302-528A maps to a region between residue 230 and 265 of human methyl-CpG binding domain protein 3 using the numbering given in entry NP_003917.1 (GeneID 53615). Antibody concentration was determined by extinction coefficient: absorbance at 280 nm of 1.4 equals 1.0 mg of IgG.
APPLICATIONS	Centrifuge tube to remove product from lid. Optimal working dilutions should be determined experimentally by the investigator. Prepare working dilution immediately before use. Western Blot Not recommended. Use rabbit anti-MBD3 antibody A302-529A. Immunoprecipitation 2 - 10 μ g/mg lysate
APPLICATION NOTES	Western blot of immunoprecipitates performed using Normal Pig Serum (Cat. No. S100-020), Goat anti-Rabbit Light Chain HRP Conjugate (Cat. No. A120-113P) and 4-20% SDS-PAGE (link to IP-western blot protocol in Additional Info section below).
ADDITIONAL INFO	https://www.bethyl.com/product/A302-528A Use the link above to view SDS, a current list of citations, and other product specific information. IP-western blot protocol: https://www.bethyl.com/content/protocol_IP_WB

This document certifies that this product has met all of the quality control standards defined by Bethyl Laboratories, Inc.
Eric McIntush, PhD | Chief Scientific Officer
Date: June 21, 2019



Detection of human MBD3 by western blot of immunoprecipitates. *Samples:* Whole cell lysate (0.5 or 1.0 mg per IP reaction; 20% of IP loaded) from HeLa cells prepared using NETN lysis buffer. *Antibodies:* Affinity purified rabbit anti-MBD3 antibody A302-528A (lot A302-528A-2) used for IP at 6 µg per reaction. MBD3 was also immunoprecipitated by rabbit anti-MBD3 antibody A302-529A. For blotting immunoprecipitated MBD3, A302-528A was used at 0.4 µg/ml. *Detection:* Chemiluminescence with an exposure time of 3 minutes.