

Vinculin Antibody

Rabbit Polyclonal

Antigen Affinity Purified	RefSeq ID	NP_003364.1
Catalog No. A302-535A	Uniprot ID	P18206
Lot No. 2	GeneID	7414

APPLICATIONS	WB, IP, IHC
SPECIES REACTIVITY	Human, Mouse
PRESUMED REACTIVITY	Based on 100% sequence identity, this antibody is predicted to react with Rat, Chicken and Pig
AMOUNT	100 µl
CONCENTRATION	1000 µg/ml
STORAGE/SHELF LIFE	2 – 8°C / 1 year from date of receipt
PHYSICAL STATE	Liquid
BUFFER	Tris-citrate/phosphate buffer, pH 7 to 8 containing 0.09% Sodium Azide
ISOTYPE	IgG
ORIGIN	USA
PRODUCTION PROCEDURES	Antibody was affinity purified using an epitope specific to Vinculin immobilized on solid support.

The epitope recognized by A302-535A maps to a region between residue 1016 and 1066 of human vinculin using the numbering given in entry NP_003364.1 (GeneID 7414).

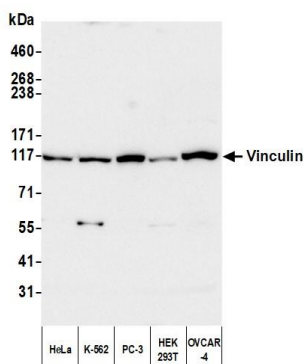
Antibody concentration was determined by extinction coefficient: absorbance at 280 nm of 1.4 equals 1.0 mg of IgG.

APPLICATIONS	Centrifuge tube to remove product from lid. Optimal working dilutions should be determined experimentally by the investigator. Prepare working dilution immediately before use.
	Western Blot 1:10,000 – 1:25,000
	Immunoprecipitation 5 – 15 µg/mg lysate
	Immunohistochemistry 1:500 to 1:2,000. Epitope retrieval with citrate buffer pH6.0 is recommended for FFPE tissue sections.

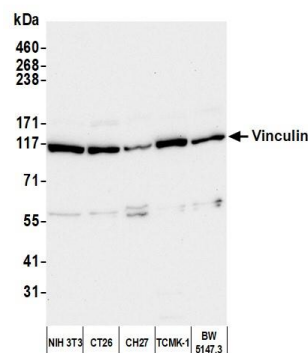
IHC HUMAN CONTROLS	Breast Carcinoma, Ovarian Carcinoma, Testicular Seminoma, Testis
---------------------------	--

ADDITIONAL INFO	https://www.fortislife.com/p/A302-535A Use the link above to view SDS, a current list of citations, and other product specific information.
------------------------	---

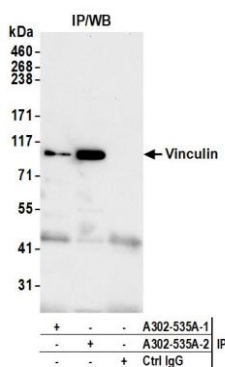
This document certifies that this product has met all of the quality control standards defined by Bethyl Laboratories, Inc.
Michael Spencer, PhD Date: April 17, 2023



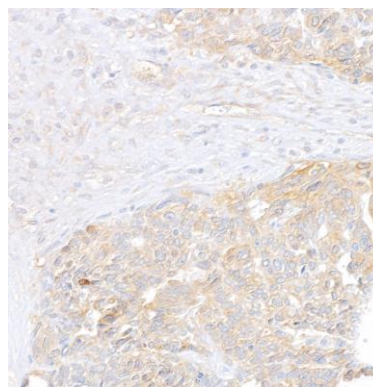
Detection of human Vinculin by western blot. *Samples:* Whole cell lysate (50 µg) from HeLa, K-562, PC-3, HEK293T, and OVCAR-4 cells prepared using NETN lysis buffer. *Antibody:* Affinity purified rabbit anti-Vinculin antibody (A302-535A lot 2) used for WB at 0.04 µg/ml. *Detection:* Chemiluminescence with an exposure time of 10 seconds.



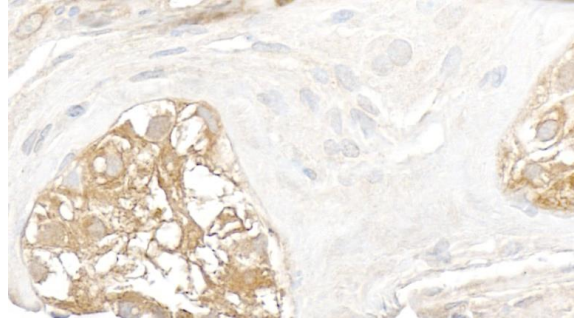
Detection of mouse Vinculin by western blot. *Samples:* Whole cell lysate (50 µg) from NIH 3T3, CT26, CH27, TCMK-1, and BW5147.3 cells prepared using NETN lysis buffer. *Antibody:* Affinity purified rabbit anti-Vinculin antibody (A302-535A lot 2) used for WB at 0.04 µg/ml. *Detection:* Chemiluminescence with an exposure time of 30 seconds.



Detection of human Vinculin by western blot of immunoprecipitates. *Samples:* Whole cell lysate (1.0 mg per IP reaction; 10% of IP loaded) from PC-3 cells prepared using NETN lysis buffer. *Antibodies:* Affinity purified rabbit anti-Vinculin antibody (A302-535A lot 2) used for IP at 6 µg per reaction. Vinculin was also immunoprecipitated by a previous lot of this antibody (A302-535A lot 1). For blotting immunoprecipitated Vinculin, A302-535A was used at 1 µg/ml. *Detection:* Chemiluminescence with an exposure time of 30 seconds.



Detection of human Vinculin by immunohistochemistry. *Sample:* FFPE section of human ovarian carcinoma. *Antibody:* Affinity purified rabbit anti-Vinculin (Cat. No. A302-535A Lot2) used at a dilution of 1:1,000 (1 µg/ml). *Detection:* DAB



Detection of human Vinculin by immunohistochemistry.

Sample: FFPE section of human testis. *Antibody:* Affinity purified rabbit anti- Vinculin (Cat. No. A302-535A Lot2) used at a dilution of 1:1,000 (1 µg/ml). *Detection:* DAB